

# October 2009



# **Doun Kaev Krong Data Book 2009**

District Code Nr: 2108

**Takeo Province**



# Table of Contents

List of Abbreviations .....	i
Glossary.....	ii
Preface .....	vi
Introduction .....	vii
SECTION A: GEOGRAPHY .....	1
1 Administration and Infrastructure.....	3
2 Land Use and Natural Resources.....	5
3 Geography .....	7
3.1 Land Area .....	7
3.2 Distances between Offices .....	7
SECTION B: DISTRICT PROFILE .....	9
1 General Information .....	11
1.1 Population of the District.....	11
1.2 Occupations .....	12
1.3 Property .....	14
2 Infrastructure and Economy.....	16
2.1 Roads in meters over 3 years.....	16
2.2 Sewerage Pipes in meters over 3 years.....	16
2.3 Drainage and Bridges .....	16
2.4 Services in the District .....	16
2.5 Agriculture.....	17
3 Social Aspects .....	28
3.1 Education .....	28
3.2 Health.....	34
3.3 Water and Sanitation .....	36
3.4 Vulnerable groups.....	40
3.5 Migration .....	42
4 Natural Resources and Environment (NRE).....	44
4.1 Families involved with NRE issues over 3 years .....	44
4.2 Percentage of Families involved with Natural Resource issues, by Commune, for 2008 .....	44
4.3 Percentage Houses with access to Garbage collection and Families affected by environmental Pollution, by Commune, for 2008 .....	44
4.4 Percentage Families using chemical Fertilizer and chemical Pesticides, by Commune, for 2008 ..	44
5 Administration and Security .....	45

5.1	Birth Registration across 3 years.....	45
5.2	Number of unregistered Infants born in 2008, by Commune .....	45
5.3	Registered criminal Cases over 3 years .....	45
5.4	Registered criminal Cases per 10,000 people, by Commune, for 2008.....	45
5.5	Number of registered Land Disputes, by Commune, in 2008 .....	45
6	Gender .....	46
6.1	Registered Domestic Violence over 3 years.....	46
6.2	Percentage of registered cases of Families experiencing domestic Violence, by Commune, in 2008 .....	46
6.3	Women's involvement over 3 years.....	46
6.4	Percentage of Female Participants in Civil Society and of 18-60 year women with uncertain Jobs, by Commune, in 2008 .....	47
6.5	Female-headed Households over 3 years.....	47
6.6	Percentage female-headed Households and with Children of less than 5 years old, by Commune, in 2008 .....	47
7	Indigenous People in the District .....	48
7.1	Ethnic Minorities in the District over 3 years.....	48
7.2	Other Minorities in the District over 3 years.....	48
	SECTION C: PLANS AND PROJECTS .....	49
8	Priorities and Plans .....	51
8.1	Priorities of Commune Councils for 2009 in the District by Sector .....	51
8.2	Temporary Agreements by Commune, for 2009 .....	53
8.3	Outputs, estimated and actual costs of C/S Fund Projects between 2005 and 2008, by Commune .....	57
8.4	Total Expenditure on C/S Fund Projects by sector and commune between 2005 and 2008.....	57
8.5	Actual 2009 C/S Fund projects by Commune .....	58
9	District level Projects from 2006 to 2009 .....	59
9.1	District Initiative Infrastructure Projects from 2006 to 2009 .....	59
9.2	District Initiative Service Projects from 2006 to 2009 .....	59
9.3	Inter Commune Council Projects in 2008 and 2009 .....	60
9.4	Other Projects in 2008 and 2009 .....	60
	SECTION D: SERVICES AND ORGANIZATIONS .....	61
10	Infrastructure.....	63
10.1	Length of and Expenditure on Roads in 2008, by District .....	63
10.2	Scale of and Expenditure on Irrigation in 2008, by District.....	63
10.3	Power Supply in 2008, by District .....	63
11	Health Facilities.....	64

11.1 Health Facilities in the Province, by Operational District.....	64
11.2 Health Facilities and Staff in the province, by Operational District.....	64
11.3 Deliveries in 2007 in the Province, by Operational District.....	67
12 Education .....	68
12.1 Schools, Classes, Students, Staff, for for all levels, for 2007/2008 by District.....	68
12.2 Characteristics of Schools and School Principals for 2007/2008 by Commune .....	68
12.3 Enrolment by Level of Education, 2006/2007 by Commune .....	69
12.4 Enrolment by Level of Education, 2007/2008 by Commune .....	69
12.5 Aspects of Enrolment for 2007/2008 by Commune.....	69
12.6 School Buildings for all schools in the District for 2007/2008, by Commune .....	69
12.7 Conditions of Classrooms and Existence of Separate School Office and Library, by Commune	70
12.8 Community Participation and Financing across all schools in the District for 2007/2008 by Commune .....	70
12.9 Percentage Student Flow Rates and Graduation by level 2006/2007, by Commune .....	70
13 Staff and Resources at the District .....	71
13.1 District Councilors elected in 2009 .....	71
13.2 Committees of the Council.....	71
13.3 Board of Governors.....	72
13.4 Offices under Sala Krong, Sala Srok and Sala Khan .....	72
13.5 Municipality/District/Khan line offices.....	72
13.6 Properties and Equipment of District Administration .....	73
13.7 Registered Revenue of the District Administration in 2008 .....	74
13.8 Services in the District .....	74
13.9 Civil Society Organizations active in the District.....	74
13.10 Private Sector Organizations.....	76
SECTION E: POVERTY DATA .....	77
14 Data on Poverty .....	79
14.1 Predicted Poverty Rates for 2009, by commune .....	79
14.2 Poverty data from survey.....	79





## List of Abbreviations

#	Number
AGR	Agriculture
BR	Birth Registration
C. Pilot	Piloted Commune
C/S	Commune / Sangkat
CBO	Community-Based Organization
CDB	Commune Database
CDPD	Commune Development and Planning Database
CIP	Commune Investment plan
CLTS	Community Led-Total Sanitation
Comm.	Commune
Com Cov	Commune Covered
CPA	Complementary Package of Activities
CPS	Community Preschool
CCWC	Commune Committees for Women and Children
DANIDA	Danish International Development Agency
DDLG	Democratic Development and Local Governance Project (EC-UNDP)
DFID	Department For International Development (UK)
DIP	District Initiative Project
DIS	District Information System
District PDRD	District Office of Rural Development
District WP	District Work Plan
DIW	District Integration Workshop
DoLA	Department of Local Administration
Dr	Doctor
DWRM	District Office of Water Resource and Meterology
ECD	Early Childhood education (part of PE)
EMIS	Education Management Information System
Event IC	Celebration of International Days
FDH	Former District Hospital
GTZ	German Society for Technical Cooperation (Gesellschaft für Technische Zusammenarbeit GmbH)
Ha	Hectare
HC	Health Center
HC (NB)	Health Center (no building)
HH	Headed Household
HSI	Intervention for Health
HP	Health Post
HW	Hand Washing
ICC	Inter Commune Council
IFAD	International Fund for Agricultural Development
IND	Industry
Inter-commune	Inter-Commune Project Management Committee or Inter-commune project
IO	International Organization
LASED	Land Allocation for Socio-Economic Development
LGCR	Local Governance for Children's Rights
M&E	Monitoring and Evaluation
MA	Medical Assistant
MoEYS	Ministry of Education, Youth and Sports
MoH	Ministry of Health

MoP	Ministry of Planning
MPA	Minimum Package of Activities
MW1	Primary Midwives
MW2	Secondary Midwives
n/a	Not available
NCD	National Contracts Database
NCDD	National Committee for Sub-National Democratic Development
NGO	Non-Governmental Organization
NRML	Natural Resources Management and Livelihood
NU1	Primary Nurse
NU2	Secondary Nurse
OD	Operational District
ODF	Open Defecation Free
Ope. Costs	Operational Costs
Others	Other Staff
PBW	Public Works
PDoEYS	Provincial Department of Education, Youth and Sport
PDRD	Provincial Department of Rural Development
PDWRM	Provincial Department of Water Resource and Meteorology
PE	Parenting Education
PHAST	Participatory Hygiene and Sanitation Transformation
PHD	Provincial Health Department
PID	Project Information Database
PMC	Project Management Committee
Pop 04-05	Population Covered 2004 or 2005
PSDD	Project to Support Democratic Development through Decentralization and Deconcentration
RRD	Rural Road Development
RH	Referral Hospital
RILGP	Rural Investment and Local Governance Project
RPRP	Rural Poverty Reduction Program
RuLIP	Rural Livelihoods Improvement Program
SIDA	Swedish International Development Cooperation Agency
SPPA	Senior Provincial Program Advisor
TBA	Traditional Birth Attendant
UNDP	United Nations Development Project
UNICEF	United Nations Children's Fund
Vil	Village
Vil Cov	Village Covered
VIL-HC	Distance from Village to Health Center
WASH	Water, Sanitation and Hygiene
WRM	Water Resource and Meteorology

## Glossary

**C/S Fund:** The Commune/Sangkat Fund is established and managed by the Government of Cambodia to provide financial support for development projects and administrative costs of Commune/Sangkat Councils. The amount is determined as a percentage of the National Budget (for 2009: 2.8% over the 2008 budget) and is expected to increase gradually over the years. The total 2009 budget under this fund is \$ 27,643,902 (of which \$ 19,272,170 is for Development Projects and \$ 8,371,731 for Administration). Under the Rural Investment and Local Governance Project the World Bank currently reimburses the costs of development projects if these meet the Bank's criteria.

**CDB:** the Commune Data Base is a national database, compiled by the Ministry of Planning, on the basis of detailed questionnaires, completed at village and commune level, which are then sent to the Departments of Planning for data entry. The most recent round of data collection took place at the end of 2008 (and is reflected in the District Data Books). Commune, District and Provincial Profiles can be generated from this database and should be available from provincial Departments of Planning.

**CDPD:** the Commune Development and Planning Database is a database maintained by Departments of Planning and Ministry of Planning, recording proposed activities as determined and prioritized by Commune and Sangkat Councils; the Temporary Agreements between these councils and supporting agencies, as decided at District Integration Workshops and details on projects that actually take place at commune, district and provincial levels.

**CIP:** The Commune Investment Plan is a rolling three-year plan, developed and decided by the Commune or Sangkat Council. It sets priorities and identifies the projects proposed for the years to come.

**Commune and Sangkat (C/S):** the Communes (in rural areas) and Sangkats (in urban areas) are the lowest and smallest units of local government. Councils are elected directly, once in five years, for the 1417 Communes and 204 Sangkats. In the C/S there are 14,119 villages, which have Village Chiefs, but don't constitute a formal level of local government.

**DIP:** the District Initiative Project is jointly supported by the MDLF (Multi-Donor Livelihood Facility (supporting the NRM&L Program)) and PSDD. In 2009 it covers 106 districts, 60% of the total in the country, with a budget of \$ 3.2 million. It is focused on capacity development in planning, democratic development, public competitive procurement, financial management and service delivery.

**DIS:** The District Information System is a national database maintained by NCDD, recording resources, staff, revenue, infrastructure and equipment available in the 193 Districts and Khans throughout the country. The last update took place in July 2009.

**District, Municipality and Khan** constitutes the third level of Government in Cambodia. There are 159 rural Districts, 26 Municipalities and 8 Khans of Phnom Penh Capital. They all have Councils which were, for the first time, elected in May 2009, by the Commune/Sangkat Councilors. These councils have a mandate for 5 years.

**DIW:** District Integration Workshops are held between July and October, to bring Commune/Sangkat Councils, looking for support for their projects, together with the governmental and non-governmental agencies that may provide support.

**ICC:** Inter Communes Council projects are executed in 10 provinces under the Democratic and Decentralized Local Governance Project (DDLG). This five year project (2006-2010) is executed by Ministry of Interior and funded by the European Commission and UNDP. The project focuses on improving dialogue partnership and accountability; create a network of Commune Councils at the provincial and national level and support and contribute to local area development for poverty reduction. The work under the ICC component supports investments and services formulated through inter-commune dialogue and planning.

**MEDiCAM:** A non-profit and non-partisan membership organization for NGOs active in Cambodia's health sector. It is the primary networking agency for health-related NGOs.

**NCDD:** the National Committee for sub-National Democratic Development is the inter-ministerial body charged with the implementation of the Organic Law (a key legislative document, adopted in 2008, outlining the envisaged decentralization). NCDD also channels substantial financial assistance by a number of Development Partners, to projects and programs at various levels. This amounted to over \$ 91 million in 2008. More information at: [www.ncdd.gov.kh](http://www.ncdd.gov.kh). This website also provides access to reports, manuals, legal documents, details on projects and more.

**OD:** the Operational Districts are the districts as defined and used by the Ministry of Health. These do not coincide with the 193 (Administrative) Districts and Khans, as used by all other RGC agencies. The Operational Districts are usually larger, and so there are 77 Operational Districts against 193 administrative Districts and Khans. However they do fit within the boundaries of administrative provinces.

**PID:** The Project Information Database is the database maintained by NCDD at national and sub national level, to follow all aspects of projects by Commune and Sangkat Councils, including the C/S Fund projects

### **Provincial Investment Fund (PIF)**

The Provincial Investment Fund is allocated to all Provinces and Municipalities according to a population based formula. Part of the fund is earmarked for support to planning activities of the Provincial / Municipal Department of Planning; and to gender mainstreaming activities of the Provincial Department of Women's Affairs. The remaining "un-earmarked PIF" is allocated by PRDC to sectoral technical departments against established criteria and in response to proposals with prioritisation taking into account: priorities formulated by the CS Councils and aggregated by District into District Priority Activities Matrices (DPAM); alignment with national planning and poverty alleviation criteria, complementarity with other planned activities; and performance of the Department concerned in implementation of activities in previous years. With this provisional allocation, the Department then programs activities through the District Integration Process. Finally, the agreed activities, plus support costs amounting to no more than 25% of the total, are included in a sub-contract signed between PRDC and the Department, pursuant to the overall PSDD contract signed between NCDD and PRDC. Total budget has been around \$ 2 million per year.

**Province:** the 23 Provinces and Phnom Penh Capital City represent the 2<sup>nd</sup> layer of government. They vary in size, from very small, like Kep (approx. 36,000 people) and Pailin (approx. 70,000 people), or large but with small populations, like Mondulkiri (over 60,000 people), and Ratanakiri (over 153,000) to densely populated and large, like Kampong Cham (over 1.7 million people) and Kandal (approx. 1.4 Million people).

**PSDD:** the Project to Support Democratic Development through Decentralization and Deconcentration is funded by DFID (UK), SIDA (Sweden) and UNDP and runs from 2006 till the end of 2010 (including a one year extension). Annual budgets range from \$ 11 million to over \$ 18 million. The project provides core technical support to NCDD and to the provinces, financial support to the C/S Fund, District Initiative, Provincial Investment Fund and capacity building support through training, studies and advisory services.

**RILGP:** The Rural Investment and Local Governance Project is a World Bank funded project that provides substantial support to C/S Fund projects and to developing the required infrastructure, policies, systems and skills. It started in 2003 with a Loan for \$ 22 million for 2003-2007 and was then extended with a Grant of \$ 36 million for the period of 2007-2010. Discussions about a possible RILGP 2 are taking place between RGC and the World Bank.

**RPRP:** the Rural Poverty Reduction Project is a seven year project from 2004 till 2010, funded by IFAD and UNDP and implemented through the Ministry of Agriculture, Forestry and Fishery, supported by the Ministry of Interior and facilitated by NCDD. The project is active in the provinces Prey Veng and Svay Rieng and focuses on 120,600 households below poverty line. The objective is poverty reduction with the active participation of the poor through improved livelihoods, Strengthened capacity, Sustainable farming systems and natural resource management, new and/or rehabilitated infrastructure development, increase accessibility to technology, services and markets for their economic and social development.

**RULIP:** the Rural Livelihoods Improvement Project is implemented by the Ministry of Agriculture Forestry and Fisheries (MAFF)' Project Support Unit- PSU, with the NCDD playing the role of cooperating agency. Funded by IFAD and UNDP, the project will run till 2014. The target group consists of poor households who have little or even no land, few livestock or other assets and often many dependents. The main goal of the project is to directly or indirectly improve the livelihood systems, food security and incomes of a total of 33,900 rural poor, ethnic minority and female headed households in targeted village of Kratie, Preah Vihear and Ratanakiri provinces in a sustainable manner.

**Seth Koma:** The UNICEF funded Seth Koma program focuses on measurable action for children and women. During 2006 -2010 it is implemented in six provinces. Government and UNICEF pursue a set of inter-related goals, addressing critical stages of the life cycle of the child: a) Mothers have safe pregnancies and deliveries and healthy newborns; b) best possible start in life of infant; c) Children enter schools at the right age of six years; d) Children are protected from exploitation, abuse, violence, discrimination and other risks; and e) Youth and adolescents acquire life skills, express their views, participate in the decisions.

## **Preface**

The Government of Cambodia attaches great importance to optimal use of scarce resources and to participatory planning and management at all levels. The Organic Law which was adopted in 2008 provides the legal context for further steps towards improving and decentralizing planning, management and monitoring, and towards greater accountability and transparency of institutions at sub-national levels.

The Government has established elected Councils at the sub-national levels, and we will progressively give them the responsibilities, together with the human and financial resources, to deliver a wide range of public services. They will be more democratic, more efficient, more transparent and accountable, better at addressing gender and other inequalities, and at fighting corruption. We recognize that development does not come from government alone; it needs the involvement of citizens, civil society and the private sector, and the new system will facilitate this.

A central element in this process is the availability of information on any aspect of development to all concerned parties. The newly elected Councillors at District and Khan level, line departments operating at these levels, but also NGOs, Development Partners, Commune Councillors and citizens throughout Cambodia need information on problems and requirements, resources and opportunities, services and agencies, plans and projects. They will need such information to better understand the present situation, set targets for the future, monitor progress, know what others are doing and to apply resources wisely and this is the reason the District Data books will be so valuable.

The District Data Books are a major step towards full transparency and towards informed planning and decision-making. They provide all available data at District, Khan, Commune and Sangkat level in easily accessible formats, in Khmer and English, through over 16,000 printed copies, CD-ROMs and the NCDD website.

This is the first time in Cambodia (and possibly in South East Asia) that such detailed information is made so widely available and NCDD should be commended for the hard work that has gone into this. We also thank the Ministry of Planning, which provided the detailed data of the Commune Data Base, the sectoral ministries and provincial authorities who contributed data and the Development Partners who provided financial support.

It is our sincere hope that the publication of the District Data Books will strengthen capacities, especially at district levels, for evidence-based development planning. We also hope that this information will deepen the understanding among Ministries, Provincial Authorities, Development Partners, NGOs and research agencies of the realities at commune and district levels.

We call upon all to use and distribute this information, complement or correct where appropriate and to contribute new data in the years to come.

**Sar KHENG**

Deputy Prime Minister, Minister of Interior and Chairman of NCDD

# Introduction

## Purpose

The purpose of the District Data Books is to bring together information on any aspect of life and development of Districts, Khans, Communes and Sangkat, together and make this widely available. The primary targets are the newly elected District Councilors, district level line departments, provincial agencies, Development Partners and NGOs operating at this level. They need detailed knowledge on current living conditions, natural resources, infrastructure, agriculture and other economic activities, current service levels, past and planned projects and available resources.

While much information exists on many of the above aspects, it is often hard to access that information and much is lost to reports, databases and statistics that are not widely shared. Data are often only available in one language and often out-of-date, and many reports cover only one sector or region.

We found that these problems are especially acute at the district level. Now that Districts are becoming a much more significant level of local government and development planning, there is an urgent need for wide-ranging data to be used for setting base-lines, planning and prioritizing, monitoring and learning.

## Approach

We have attempted to identify and compile all available statistics, reports, maps and other data at district and/or commune level. From this we have selected information that is available for all or most districts, reasonably reliable and up-to-date, sufficiently detailed and of possible interest to development planners, decision makers, agencies and citizens.

The major sources of the information in these District Data Books are:

- a) The Commune Data Base information over the years 2006 to 2009 (the most recent data were collected late last 2008), as compiled by the Ministry of Planning
- b) Detailed information directly collected from the Ministry of Health, the Ministry of Education, Youth and Sports and (for maps) the Ministry of Land Management, Urban Planning and Construction
- c) The Project Information Database (PID) at NCDD (up-to-date)
- d) The Commune Development and Planning Database (CDPD) (up to date)
- e) The District Information System (DIS) (updated per Mid 2009)
- f) Direct data collection at provincial and district level on private sector, irrigation, roads, and electricity, through provincial agencies
- g) Medical data collected from MEDiCAM
- h) The ID Poor Project – for poverty data on a number of provinces and districts
- i) NCDD's work on predictive poverty rates
- j) Specific projects for outputs, plans and budgets (Seth Koma, RILGP, RPRP and ICC)

## Limitations of the data

We are fully aware that the data we collected are not always complete, consistent or correct. While we have rejected information that was wrong or very incomplete, we decided not to aim for statistical and scientific perfection, but to include information that is useful, relevant

and comprehensive. We also accepted different sources for the same data as this may encourage discussion on the quality of the respective data.

We strongly encourage anyone who notes errors or incompleteness in these data to contact us and to share their data. We hope that the next round of producing such District Data Books can draw on wider sources and more complete data.

We encourage the District Administrations, who receive these data also in digital format, not only to use these for their planning and monitoring, but also to start correcting and updating these data and to share new data with NCDD for future use.

## Contents

The information in the following pages is organized in five sections:

- a) **Geographical data:** this section provides maps on infrastructure and administration and on land use and natural resources management. These maps are also provided in large format to all Districts and Khans.
- b) **District Profile:** this presents wide ranging data, covering 2006 – 2009, at district and commune level, extracted from the Commune Data Base, but edited for better understanding.
- c) **Plans and Projects:** this section presents development priorities determined by Commune and Sangkat Councils, Temporary Agreements, outputs and expenditure of major projects at Commune and District level over 2006 – 2008 and plans and budgets for 2009.
- d) **Services and Organizations:** this section provides details on key infrastructure (roads, electricity, irrigation systems) and services in health and education at district and commune level. It also provides an inventory of resources at the District Administration, NGOs operating in the district and private sector agencies active in the district.
- e) **Poverty Data:** this section provides predicted poverty rates for 2009 for all districts and communes and detailed poverty data compiled and processed by the ID Poor project for those that have been covered by this project.

## The future

It is our hope that this is the start of a longer-term process. We hope that a next edition of these District Data Books will offer more comprehensive, correct and up-to-date information. We hope that the District Administrations will not only start using this information, but also improve and update it. For this they are all provided with the full data set in digital format.

We invite agencies, projects and experts to send reports, statistics and maps that could be used for a next version to us and we invite all users of the District Data Books to inform us about errors, updates and inconsistencies. Please contact us through [info@ncdd.gov.kh](mailto:info@ncdd.gov.kh)

We now invite you to browse through this data book. You may open this randomly or use the table of contents and go to the aspects that have your special interest.

We hope that you will be informed, surprised and assisted. We hope, above all, that this information will lead to a deeper understanding of causes and effects of poverty, to purposeful decisions on how to tackle those causes and to greater transparency in using scarce resources for the benefit of all.

Martin de Graaf  
Program Advisor, PSDD/NCD



## **SECTION A: GEOGRAPHY**



# **1 Administration and Infrastructure**

Please see separate folder containing A3 maps.



## **2 Land Use and Natural Resources**

Please see separate folder containing A3 maps



### 3 Geography

#### 3.1 Land Area

Total Land Area (ha)	Forest Land Area (ha)		Cultivation Land Area (ha)	Construction Land Area (ha)	Other Land Area (ha)
	Total	Flooded Forest Area			
9469.22	146	0	6682.22	1275.03	1365.97

#### 3.2 Distances between Offices

Location	Distance (Km)
From District Office to C/S Office of Sangkat Baray	4
From District Office to C/S Office of Sangkat Roka Knong	5
From District Office to C/S Office of Sangkat Roka Krau	3





## **SECTION B: DISTRICT PROFILE<sup>1</sup>**

---

<sup>1</sup> All data in this section come from the Commune Database (CDB) unless otherwise specified. These include primarily new CDB data, collected late 2008, and some data from earlier years. Please note that percentages are rounded to the nearest whole number.



# 1 General Information

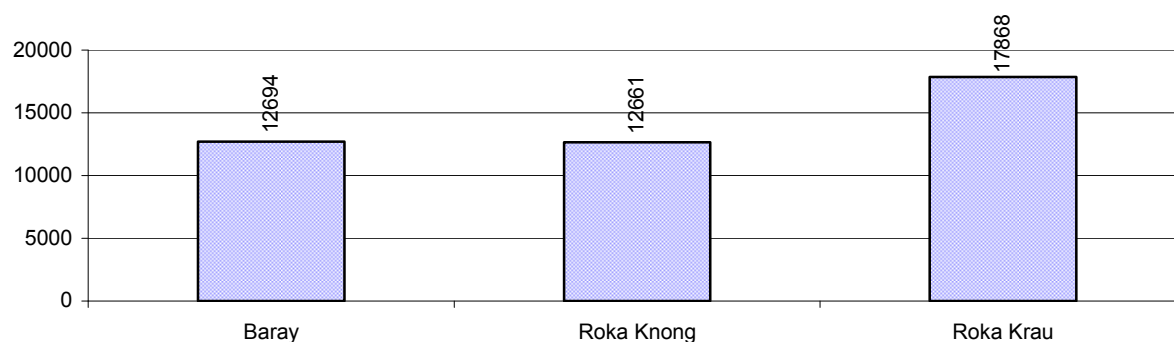
## 1.1 Population of the District

### 1.1.1 Total Population

Number of families	2005	2006	2007	2008
Total number of families	7,298 families	7,292 families	7,393 families	7,779 families
Increase (+)/Decrease (-) in nr of families		0%	1%	5%
Total population	37,335 pers	42,587 pers	42,338 pers	43,223 pers
Increase (+)/Decrease (-) in nr of people		14%	-1%	2%
Number of female Headed Households (HH)	1,523 families	1,820 families	1,719 families	1,774 families

**Note:** Percentages of population and increase/decrease are calculated on basis of the previous year. A negative sign in front of the percentage indicates a decrease in population.

### 1.1.2 Population, by Commune, in 2008



### 1.1.3 Population, by Age Group, over 3 years

Population by age group	2006	2007	2008	
	%	%	%	Number
<b>Age 0-5 years (as percentage of the population)</b>	12%	13%	12%	5,053 persons
Male 0-5 yrs	55%	52%	51%	2,574 persons
Female 0-5 yrs	45%	48%	49%	2,479 persons
<b>Age 6-17 (as percentage of the population)</b>	29%	28%	29%	12,407 persons
Male 6-17 yrs	54%	53%	52%	6,477 persons
Female 6-17 yrs	46%	47%	48%	5,930 persons
<b>Age 18-60 (as percentage of the population)</b>	53%	54%	53%	22,749 persons
Male 18-60 yrs	51%	49%	51%	11,681 persons
Female 18-60 yrs	49%	51%	49%	11,068 persons
<b>Age 61 above (as percentage of the population)</b>	6%	6%	7%	3,014 persons
Male 61	51%	46%	46%	1,380 persons
Female 61	49%	54%	54%	1,634 persons

**Note:** The overall percentage for each age group is calculated on the basis of the total population. The gender distribution of each group is calculated on the basis of the population within that particular age group.

## 1.2 Occupations

### 1.2.1 Percentage of families with a particular Occupation over 3 years

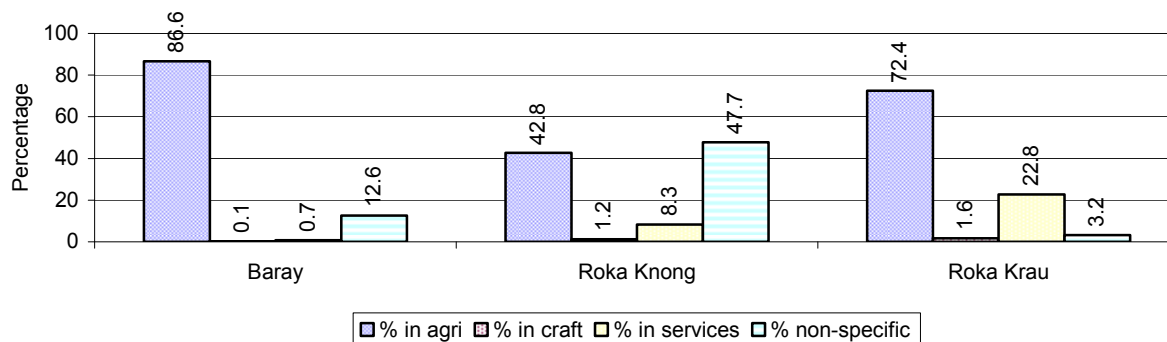
*This table shows the percentage of the population who have a particular occupation (job), for example the percentage of the population in the district who are rice farmers, furniture crafter, trader, etc.*

Description	2006	2007	2008	
	%	%	%	Number
<b>Families whose main occupation is agriculture</b>	66%	66%	68%	5,277 Families
Families whose primary occupation is rice farming	60%	64%	62%	4,819 Families
Families whose primary occupation is cultivating long-term crops	0%	0%	1%	59 Families
Families whose primary occupation is cultivating short-term crops	3%	1%	4%	312 Families
Families whose primary occupation is cultivating vegetable	1%	0%	1%	62 Families
Families whose primary occupation is fisherman	1%	0%	0%	10 Families
Families whose primary occupation is livestock farmer	0%	0%	0%	15 Families
Families whose primary occupation is NTFP collection	0%	0%	0%	0 Families
<b>Families whose main occupation is craft work</b>	1%	1%	1%	81 Families
Families, whose main occupation is in furniture craft, wooden, rattan, vine, bamboo	0%	0%	0%	8 Families
Families whose main occupation is in metal, aluminum, glass goods production	0%	0%	0%	15 Families
Families whose main occupation is food production	1%	0%	0%	5 Families
Families whose main occupation is tire, plastics and rubber goods production	0%	0%	0%	0 Families
Families whose main occupation is textile, clothing goods production	0%	0%	0%	16 Families
Families whose main occupation is in other production, not listed above	0%	0%	0%	37 Families
<b>Families whose main occupation is services</b>	15%	12%	12%	918 Families
Families whose main occupation is trade	10%	10%	9%	701 Families
Families whose main occupation is repair	1%	1%	1%	100 Families
Families whose main occupation is providing transport services	2%	1%	1%	80 Families
Families whose main occupation is providing other services	2%	0%	0%	37 Families
Families whose main occupation is not clear (or multi)	18%	21%	19%	1,503 Families

**Note:** The occupation percentages are calculated on the basis of the total number of families.

### 1.2.2 Percentage Families that work in one of four occupational sectors, by Commune in 2008

This table indicates the percentage of families involved in one of four occupation types: agriculture, craft, services or non-specific (other). Please note agriculture includes forestry activities such as cutting down trees and gathering gum from the trees.



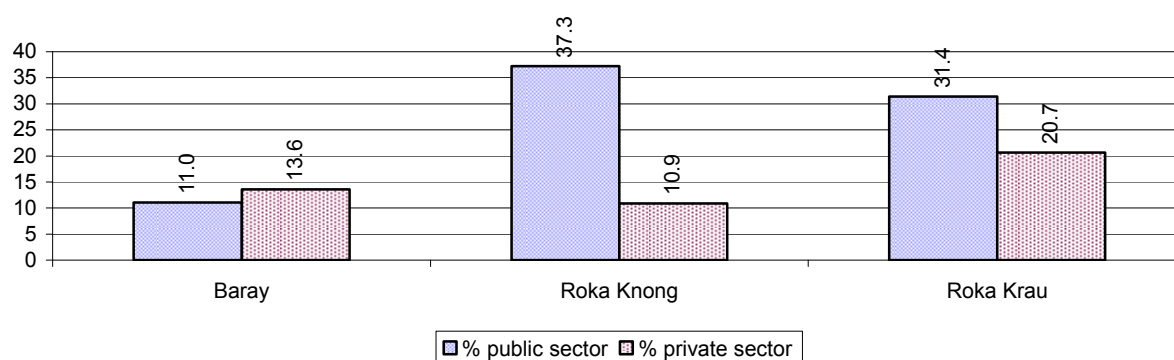
**Note:** Calculated on the basis of the total number of families within a commune.

### 1.2.3 Percentage of Families with public Sector, private Sector or uncertain Jobs, over 3 years

Description	2006	2007	2008	
	%	%	%	Number
Families that have a family member who is a government official, staff or worker	24%	23%	27%	2,102 families
Families that have a family member who is a private sector staff or worker	17%	20%	16%	1,213 families
Number of people aged 18-60 with uncertain/irregular jobs	2%	2%	5%	1,195 persons

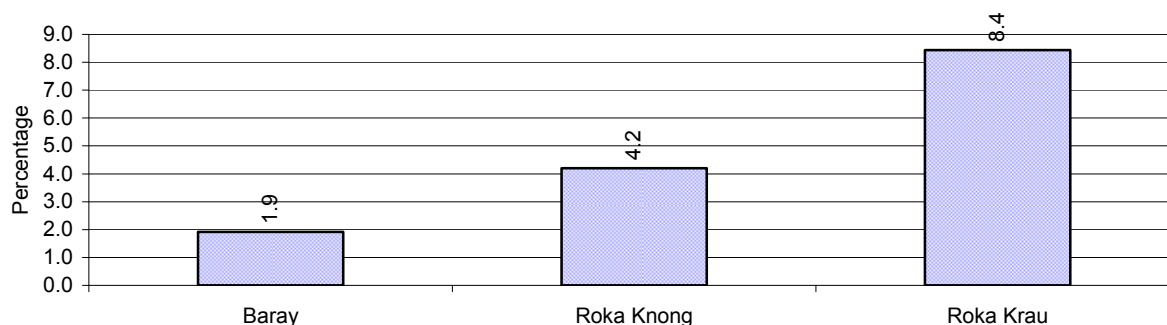
**Note:** In the first two rows percentages are calculated on the basis of the total number of families. In the third row the percentage is calculated on the basis of the total number of people aged 18-60 years.

### 1.2.4 Percentage of Families with public or private Sector Jobs, by Commune in 2008



**Note:** Calculated on the basis of the total number of families in the commune

### 1.2.5 Percentage of People aged 18-60 years with uncertain/irregular Jobs, by Commune, in 2008.



## 1.3 Property

### 1.3.1 Housing types and facilities over 3 years

This table shows the percentage of people living in a certain type of house. It also indicates how many houses have electricity or battery powered lights and how many have TV.

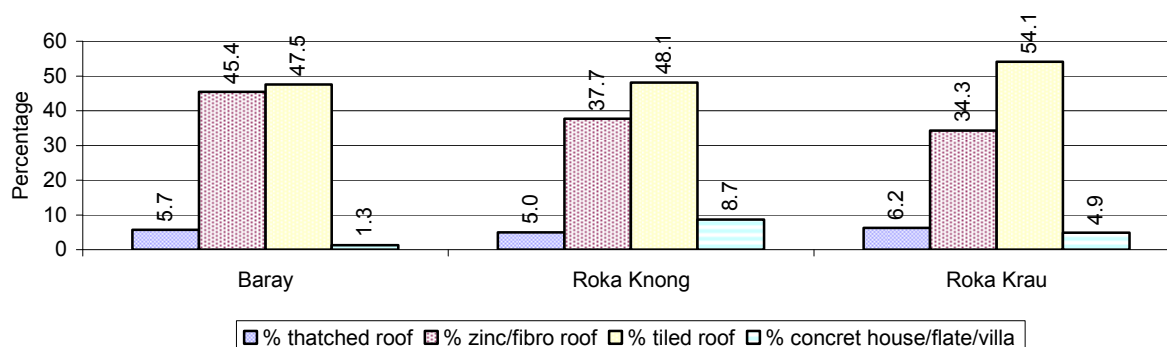
House Type	2006	2007	2008	
	%	%	%	Number
House with thatched roof	9 %	9 %	6 %	432 houses
House with zinc/fibro roof	37 %	38 %	38 %	2,914 houses
House with tiled roof	49 %	49 %	50 %	3,820 houses
Flats/apartments (with many families living)	1 %	1 %	1 %	82 houses
Concrete house or flat (with one family living)	3 %	3 %	4 %	281 houses
Villa house	2 %	0 %	1 %	40 houses
Houses with electricity	40 %	48 %	57 %	4,344 houses
Houses with battery light	59 %	44 %	42 %	3,212 houses
Houses with TV	78 %	80 %	87 %	6,604 houses

**Note:** Calculated against the total number of houses

### 1.3.2 Families living on public Land or without a permanent House

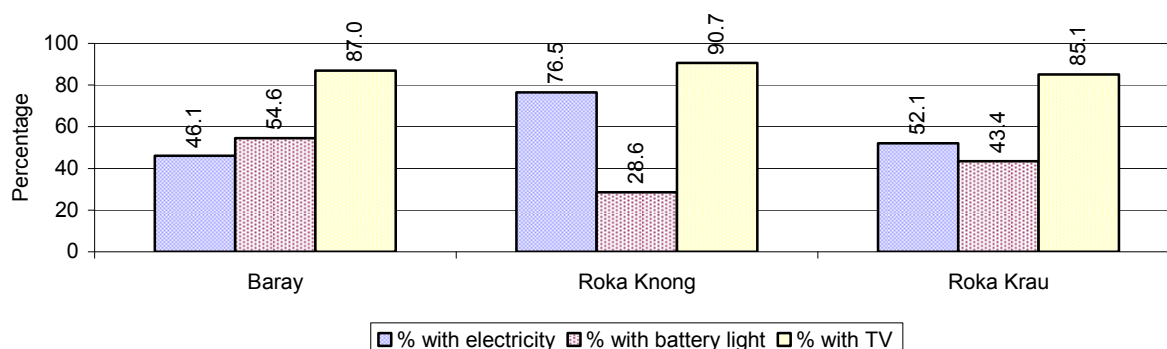
Living situation	2006	2007	2008
Families living in a house on public land	61 families	76 families	141 families
People, without permanent housing	48 person(s)	33 person(s)	51 person(s)

### 1.3.3 Percentage of Population living in a particular type of House, by Commune, in 2008



**Note:** Calculated against the total number of houses in each commune

### 1.3.4 Percentage of Houses with Electricity, Battery Lights and/or TVs, by Commune, in 2008



**Note:** Calculated against the total number of houses in each commune

### 1.3.5 Types of Vehicles and their ratio to Families across 3 years

This table shows the number of families per vehicle in the district. The last column shows the total number of each type of vehicle in the district for 2008.

Description	2006 ratio	2007 ratio	2008	
			Ratio	Number
Bicycle and bicycle with trailer	1	1	1	5,689
Ox-carts and horse-carts	5	5	5	1,563
Motorbike/with trailer	2	2	2	3,547
Motor tri-cycle	N/A	3,697	648	12
Large Transportation				
<b>Total number of cars/trucks</b>	15	14	13	582
Locally made vehicles	2,431	1,848	1,556	5
Trucks for goods transport	56	35	31	254
Buses/mini buses for passengers	187	176	120	65
Family cars	24	29	30	258
Agriculture machinery				
Tractors used for plowing	729	2,464	2,593	3
Power-tillage used for plowing	63	49	49	160
Other type of machinery				
Other type of machinery	521	255	1,111	7
Water transportation				
Row boats	36	40	13	608
<b>Total number of motor boats</b>	15	27	84	93
Motor boats used for fishing	16	28	92	85
Motor boats used for passengers	365	411	972	8
Motor boats used for goods transporting	N/A	N/A	N/A	0

**Note:** Ratio of families to a particular type of vehicle is the result of the total number of families divided by total number of that type of vehicle. Other types of vehicles, such as bulldozer, excavator, rollers etc. are not listed.

## 2 Infrastructure and Economy

### 2.1 Roads in meters over 3 years

Description	2006	2007	2008
Bituminous road	10,600 m	3,500 m	3,650 m
DBST, Macadam road	2,850 m	7,000 m	7,000 m
Concrete road	0 m	0 m	0 m
Laterite road	30,000 m	26,690 m	24,123 m
Constructed earth road	10,122 m	5,691 m	6,412 m
Un-constructed earth road	4,467 m	3,200 m	9,300 m

### 2.2 Sewerage Pipes in meters over 3 years

Description	Sewage pipe length		
	2006	2007	2008
Total length of sewage pipe, diameter 30-50 cm	1,950 m	180 m	330 m
Length of newly constructed sewage pipe, diameter 30-50 cm	0 m	0 m	0 m
Length of sewage pipe, diameter 30-50 cm needs repair/rehabilitation	0 m	50 m	50 m
Total length of sewage pipe, diameter of pipe 60-100 cm	480 m	2,136 m	2,136 m
Length of newly constructed sewage pipe, diameter 60-100 cm	0 m	9 m	0 m
Length of sewage pipe, diameter 60-100 cm needs repair/rehabilitation	0 m	0 m	0 m
Sewage pipe, diameter of pipe over 100 cm	500 m	0 m	0 m
Length of newly constructed sewage pipe, diameter over 100 cm	0 m	0 m	0 m
Length of sewage pipe, diameter over 100 cm needs repair/rehabilitation	0 m	0 m	0 m

### 2.3 Drainage and Bridges

Construction Type	2006		2007		2008	
	place(s)	Length	place(s)	Length	place(s)	Length
Single pipe culvert	1	5m	16	2,133 m	16	2,133 m
Double-pipe culvert	0	0m	1	3 m	2	7 m
Box pipe culvert	0	0m	0	0m	0	0 m
Wooden bridge	1	24m	1	17m	1	17 m
Concrete bridge	2	135m	2	36m	2	43 m
Bale bridge	0	0m	0	0m	0	0 m
Spillway construction	3	235m	2	100m	3	136 m

### 2.4 Services in the District

Descriptions	Number of places by year		
	2006	2007	2008
<b>Public</b>			
Electricity generating stations	1	0	1
Health clinics	12	5	13
<b>Private</b>			
Bicycle and motorcycle repair places	35	21	41
Agricultural machinery, tools and equipment repair places	0	3	3
Electronic tool repair places	0	4	3
Battery-charging services	19	18	15
Handicraft places, wooden furniture and forest by-products	1	1	11
Other handicraft places (excluding furniture)	2	7	7



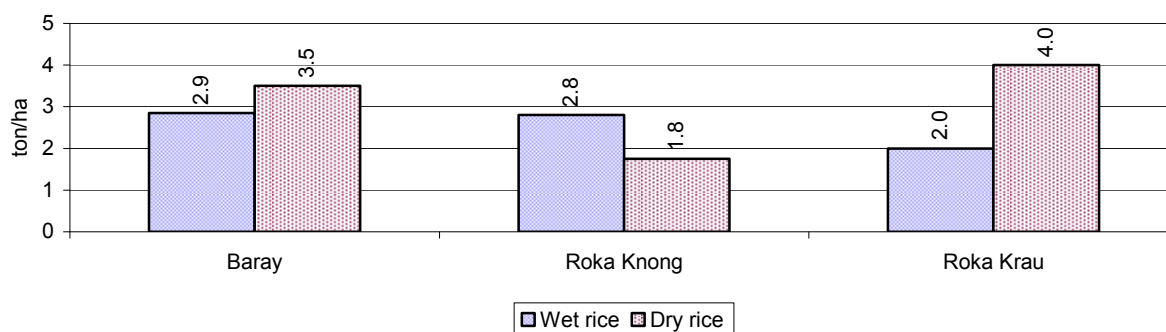
Descriptions	Number of places by year		
	2006	2007	2008
Small-scale services (hairstresser, phone service, massage, Karaoke, etc)	16	26	27
Small-scale food shop businesses (Food, groceries, drink shop, etc)	60	17	47
Small-scale rice mills	164	76	83
Medium or large-scale rice mills	5	2	3
Small-scale markets	0	2	2
Large-scale market	1	1	1
Alcohol refinery places	23	43	43
Pharmacies and small drug stores	7	7	6
Hotels	0	0	0
Guest houses	9	2	12
Restaurants	3	3	3
Gasoline stations	5	4	5

## 2.5 Agriculture

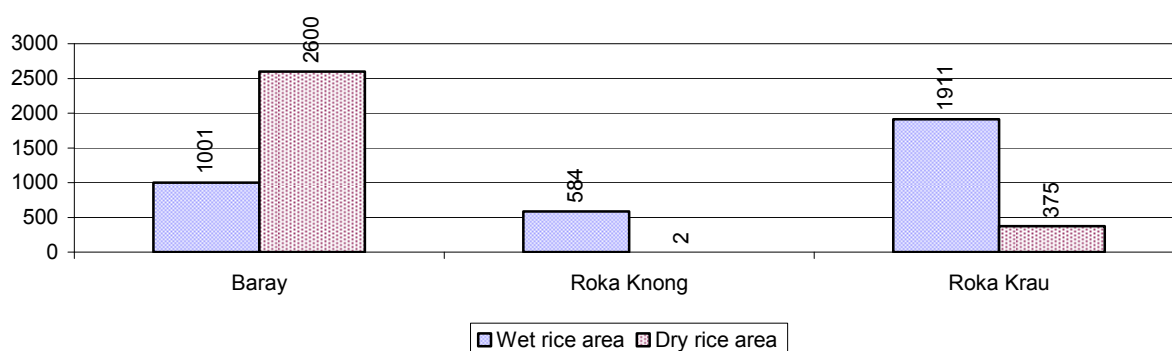
### 2.5.1 Rice cultivation in the District over 3 years

Description	2006	2007	2008
Total dry rice land area	3,000 ha	2,975 ha	3,000 ha
Actual dry rice cultivation area	2,977 ha	2,975 ha	2,977 ha
% actual cultivation to total land	99%	100%	99%
Total dry rice production	6,450 tonne(s)	11,900 tonne(s)	9,179 tonne(s)
Average dry rice yield	2.2 tonne(s)/ha	4.0 tonne(s)/ha	3.1 tonne(s)/ha
Total wet rice land area	3,555 ha	7,805 ha	3,496 ha
Actual wet rice cultivation area	3,555 ha	7,785 ha	3,496 ha
% actual cultivation to total land	100 %	100%	100%
Total wet rice production	8,294.23 tonne(s)	15,569.34 tonne(s)	8,913.96 tonne(s)
Average wet rice yield	2.3 tonne(s)/ha	2.0 tonne(s)/ha	2.6 tonne(s)/ha
Total intensive rice land area	16 ha	15 ha	16 ha
Actual intensive rice cultivation area	- ha	- ha	- ha
Average intensive rice yield	- tonne(s)/ha	- tonne(s)/ha	- tonne(s)/ha
Actual upland rice cultivation area	0 ha	0 ha	0 ha
Total upland rice production	- tonne(s)	- tonne(s)	- tonne(s)
Average upland rice yield	- tonne(s)/ha	- tonne(s)/ha	- tonne(s)/ha

### 2.5.2 Estimated wet and dry Season Rice Yield in tonne(s)/Ha, by Commune, in 2008



### 2.5.3 Cultivated wet and dry Season Rice areas in Ha, by Commune, in 2008



### 2.5.4 Estimated intensive Rice Yields in tonnes/Ha, by Commune, for 2008

There were no estimated intensive rice yields in this District in 2008

### 2.5.5 Estimated upland Rice Yield in tonnes/Ha, by Commune, for 2008

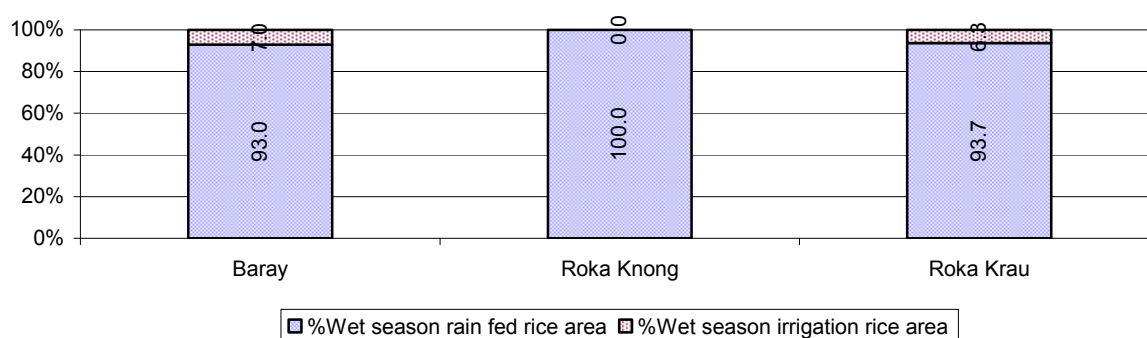
There were no estimated upland rice yields in this District in 2008

### 2.5.6 Wet season Rice irrigation across 3 years

Description		2006 %	2007 %	2008	
				%	Number
Total area of wet season rain fed rice land		91%	98%	95 %	3,306 ha
Percentage of wet season rice land that is irrigated; and for 2008 area in Ha		9 %	2 %	5 %	190 ha
Where	Area irrigated from canal/dam	100 %	100 %	63 %	120 ha
	Area irrigated from river, stream, lake, natural pond	0 %	0 %	0 %	0 ha
	Area irrigated from drilled well	0 %	0 %	0 %	0 ha
	Area irrigated from dug pond	0 %	0 %	37 %	70 ha

### 2.5.7 Water sources for wet Season Rice Cultivation, by Commune, in 2008

This chart shows the percentage of wet season rice cultivation receiving water from rain (natural) and from irrigation.



### 2.5.8 Access to Irrigation

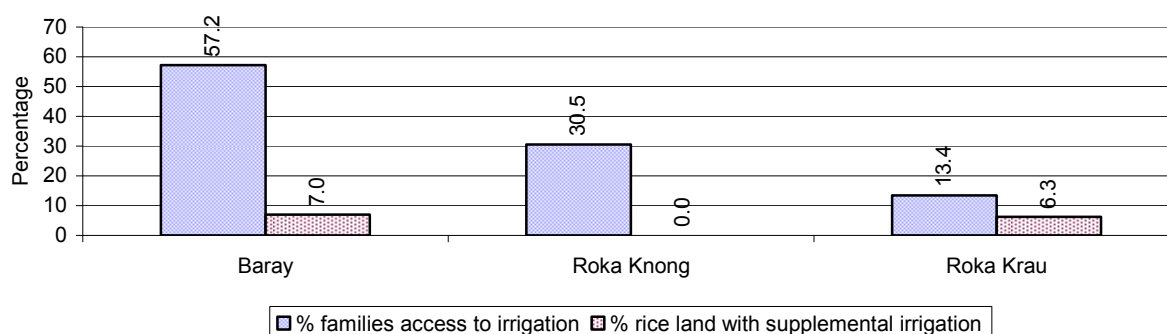
Description	2006 %	2007 %	2008	
			%	Number
Families who have access to irrigation water	52%	41%	34%	1,636 families
Families who have irrigation wells	0%	0%	1%	30 families

**Note:** Calculated against the total number of families are rice farmers

### 2.5.9 Number of Irrigation Wells over 3 years

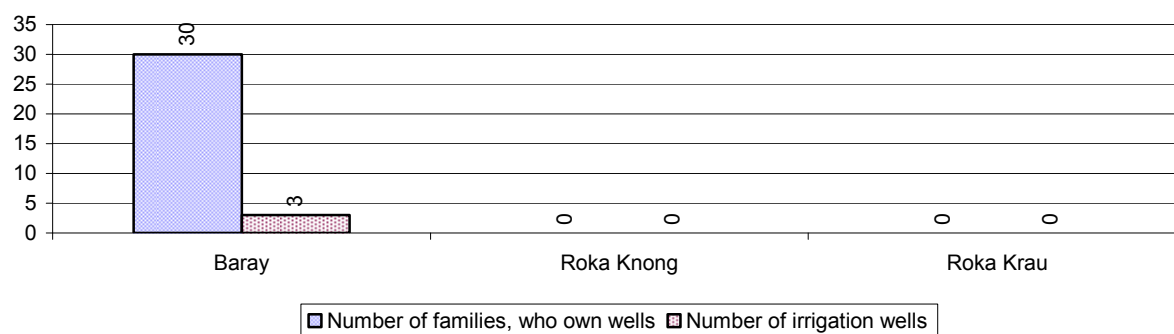
Description	2006	2007	2008
Number of irrigation wells	0 wells	0 wells	3 wells

### 2.5.10 Percentage of Families with access to (supplemental) Irrigation for wet Season Rice cultivation, by Commune, in 2008



**Note:** % of families, with access to irrigation is calculated against the total number of families, whose main occupation is rice farming. Irrigated wet rice land area is calculated against the total actual wet rice land cultivated areas

### 2.5.11 Irrigation Wells, by Commune, in 2008

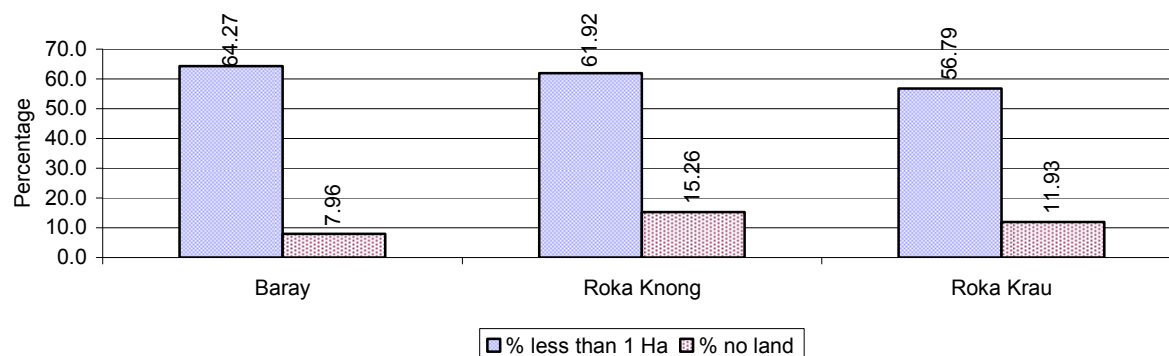


### 2.5.12 Farmers owning less than one hectare of Rice Land

Description	2006	2007	2008	
	%	%	%	Number
Families who have less than one hectare of rice land	67%	58%	61%	2,923 families
Families who do not own any rice land	7%	6%	11%	524 families

**Note:** Calculated on basis of total number of families who are rice farming

### 2.5.13 Percentage of Farmers with less than one Hectare or no Rice Land, by Commune, in 2008

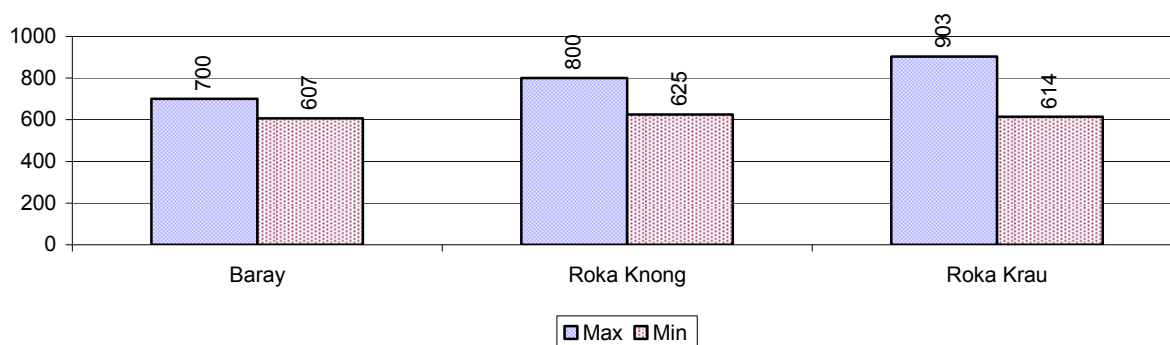


**Note:** Calculated on basis of total number of families who are rice farming

### 2.5.14 Average farm-gate Prices of Rice, over 3 years

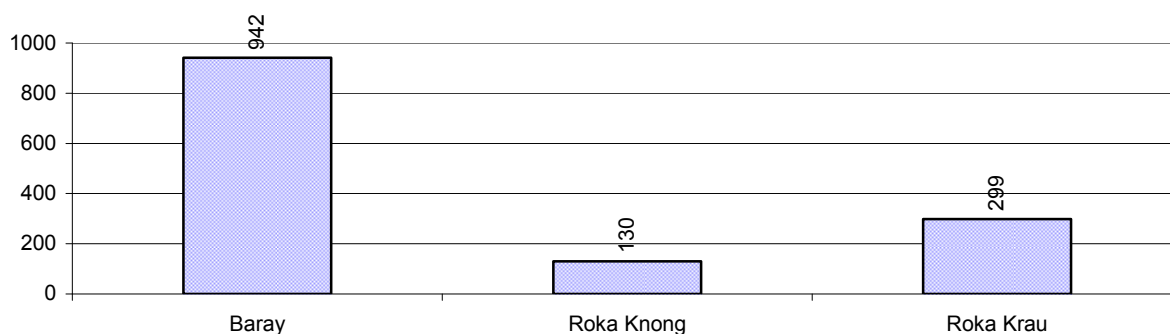
Description	2006	2007	2008
Maximum average farm gate price	548 Riels/Kg	752 Riels/Kg	801 Riels/Kg
Minimum average farm gate price	428 Riels/Kg	605 Riels/Kg	615 Riels/Kg
Average farm gate price	488 Riels/Kg	678 Riels/Kg	708 Riels/Kg
Average rice production per person	347 Kg/person	649 Kg/person	419 Kg/person

### 2.5.15 Minimum and maximum farm-gate Prices of Rice in Riel/kg, by Commune, in 2008



### 2.5.16 Production of Paddy in Kgs/Person, by Commune, in 2008

*This table shows how much paddy (harvested rice) is produced in a year in a commune, in kgs per person.*



### 2.5.17 Production of other Crops, over 3 years

Crops	2006	2007	2008
Corn cultivation area	0 ha	0 ha	0 ha
Estimated corn yield	- tonne(s)/ha	- tonne(s)/ha	- tonne(s)/ha
Estimated corn production	- tonne(s)	- tonne(s)	- tonne(s)
Soya bean cultivation area	0 ha	0 ha	0 ha
Estimated Soya bean yield	- tonne(s)/ha	- tonne(s)/ha	- tonne(s)/ha
Estimated Soya bean production	- tonne(s)	- tonne(s)	- tonne(s)
Mungbean cultivation area	0 ha	0 ha	0 ha
Estimated Mungbean yield	- tonne(s)/ha	- tonne(s)/ha	- tonne(s)/ha
Estimated Mungbean production	- tonne(s)	- tonne(s)	- tonne(s)
Peanut cultivation area	0 ha	0 ha	0 ha
Estimated Peanut yield	- tonne(s)/ha	- tonne(s)/ha	- tonne(s)/ha
Estimated Peanut production	- tonne(s)	- tonne(s)	- tonne(s)
Cassava cultivation area	0 ha	0 ha	0 ha
Estimated Cassava yield	- tonne(s)/ha	- tonne(s)/ha	- tonne(s)/ha
Estimated Cassava production	- tonne(s)	- tonne(s)	- tonne(s)
Sweet potatoes cultivation area	5 ha	5 ha	0 ha

Crops	2006	2007	2008
Estimated Sweet potatoes yield	3.0 tonne(s)/ha	4.0 tonne(s)/ha	- tonne(s)/ha
Estimated Sweet potatoes production	15 tonne(s)	20 tonne(s)	- tonne(s)
Sesame cultivation area	0 ha	0 ha	0 ha
Estimated Sesame yield	- tonne(s)/ha	- tonne(s)/ha	- tonne(s)/ha
Estimated Sesame production	- tonne(s)	- tonne(s)	- tonne(s)

#### 2.5.18 Yields of Corn, Soya beans and Mungbeans in tonne(s)/ha, by Commune, in 2008

There were no yields for any of these crops in this District in 2008

#### 2.5.19 Yields of Peanuts and Cassava in tonne(s)/ha by Commune, in 2008

There were no yields for any of these crops in this District in 2008

#### 2.5.20 Yields of Sweet Potatoes and Sesame in tonne(s)/ha, by Commune, in 2008

There were no yields for any of these crops in this District in 2008

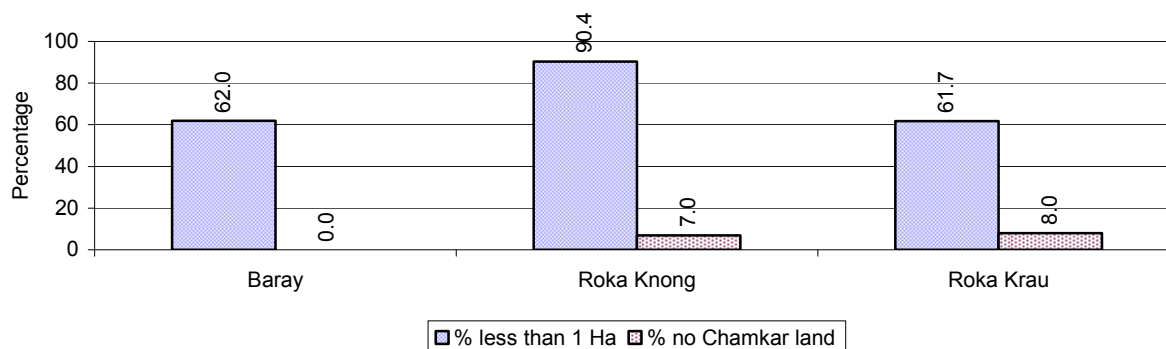
#### 2.5.21 Percentage Farmers who own less than 1 Ha or no Chamkar land

Description	2006	2007	2008	
	%	%	%	Number
Families, who own less than 1ha of Chamkar land	52%	86%	74%	321 families
Families, with no Chamkar land	2%	1%	6%	27 families

**Note 1:** Calculated as a percentage of the total number of families whose main occupation is Chamkar (not rice) farming

**Note 2:** Chamkar land is no-rice land, i.e. other crops

#### 2.5.22 Percentage Farmers owning less than 1 ha or no Chamkar land, by Commune, in 2008



**Note:** Percentage is calculated among families, who Chamkar farm as a main occupation, not the total population of the commune.

#### 2.5.23 Percentage of Families raising Cattle/Buffalo, over 3 years

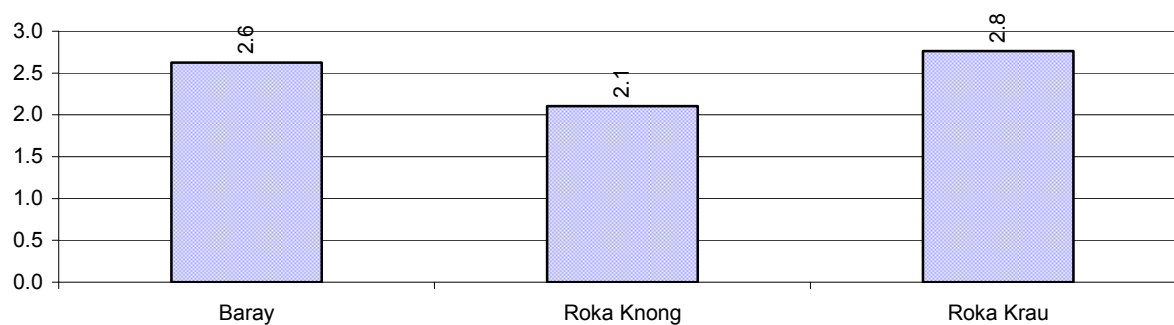
Description	2006	2007	2008	
	%	%	%	Number
Families raising cattle/buffalo	46%	46%	46%	3,587 families
Families raising cattle/buffalo as labor forces	33%	31%	31%	2,404 families

**Note:** Calculated against the total number of families.

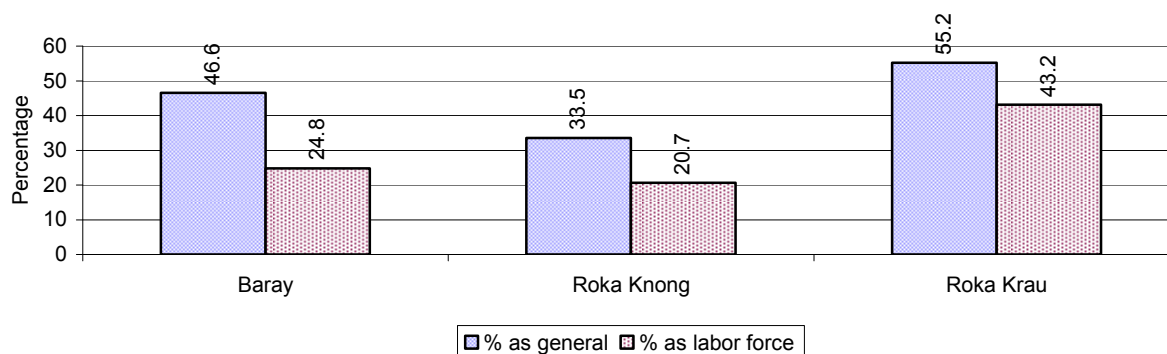
**2.5.24 Number of Cattle/buffalo being raised, over 3 years**

Description	2006	2007	2008
Total number of cattle/buffalo	8,498 head(s)	8,672 head(s)	9,251 head(s)
Average cattle/buffalo per families	2.5 head(s)/families	2.5 head(s)/families	3 head(s)/families

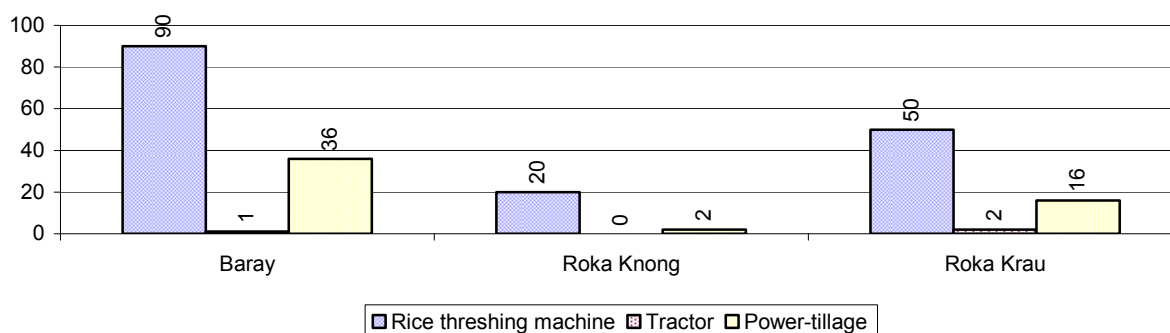
**Note:** Calculated by dividing total number of cattle/buffalo by total number of cattle/buffalo raising families

**2.5.25 Average number of Cattle/Buffalo per Family, by Commune, in 2008**

**Note:** Calculated by dividing total number of cattle/buffalo by total number of cattle/buffalo raising families

**2.5.26 Percentage Families raising Cattle/Buffalo, for general and labor purposes in 2008, by Commune**

**Note:** Calculated using the total number of families raising cattle/buffalo against the total number of families.

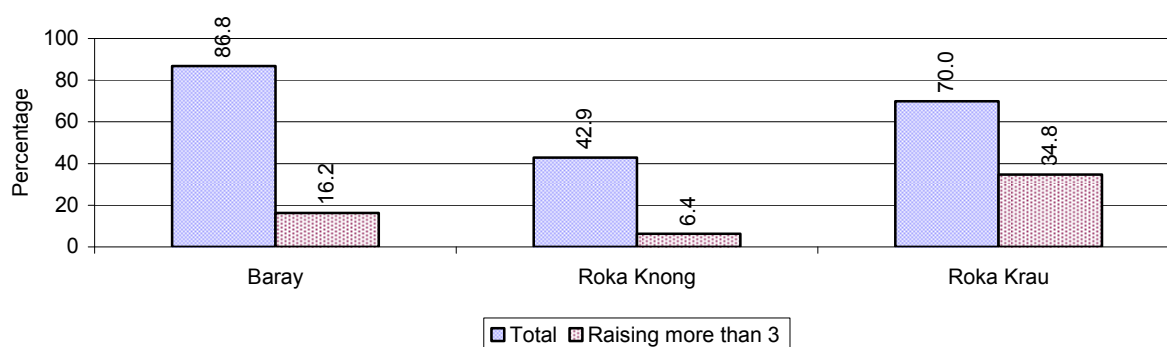
**2.5.27 Type and number of agricultural Machines, by Commune, in 2008**

### 2.5.28 Livestock-producing Households over 3 years

Description	2006 %	2007 %	2008	
			%	Number
Total number of families raising pigs	71%	66%	67%	5,208 families
number of families raising more than 3 pigs	17%	14%	21%	1,611 families
Total number of families raising chickens	79%	78%	78%	6,067 families
number of families raising more than 3 chickens	58%	61%	60%	4,646 families
Total number of families raising ducks	19%	13%	11%	836 families
number of families raising more than 5 ducks	12%	9%	6%	429 families
Total number of families raising goats or sheep	0%	0%	0%	10 families
Total number of families raising horses	1%	1%	1%	39 families

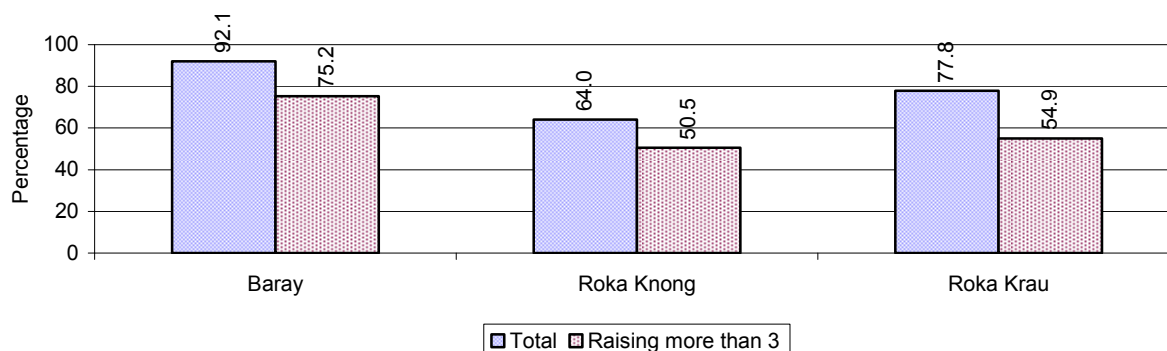
**Note:** Calculated against the total number of families

### 2.5.29 Percentage Families raising Pigs, by Commune, in 2008



**Note:** Calculated against the total number of families in the commune

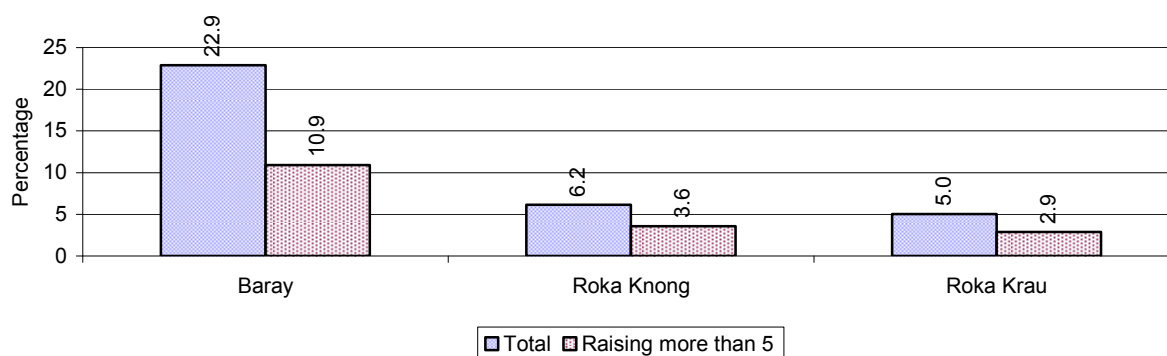
### 2.5.30 Percentage Families raising Chickens, by Commune, in 2008



**Note:** Calculated against the total number of families in the commune

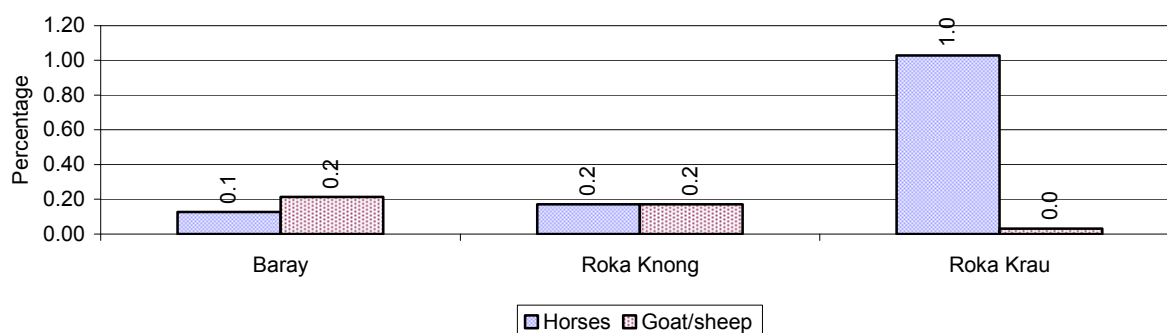


### 2.5.31 Percentage Families raising Ducks, by Commune, in 2008



**Note:** Calculated against the total number of families in the commune

### 2.5.32 Percentage Families raising Horses, Goats or Sheep, by Commune, in 2008

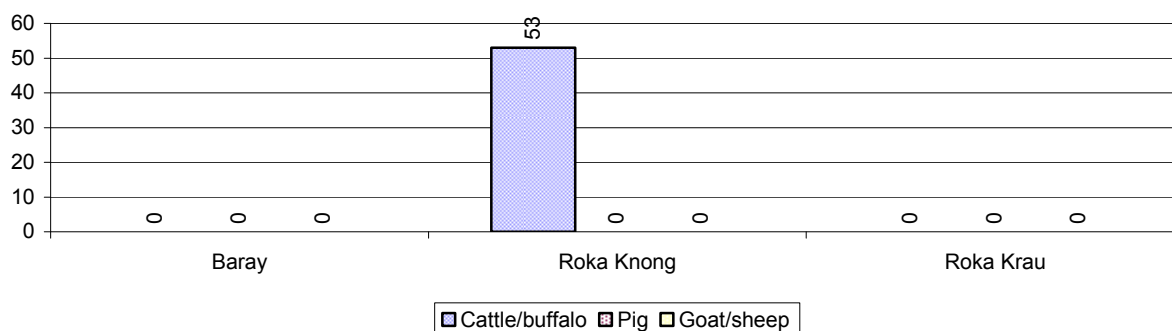


**Note:** Calculated against the total number of families in the commune

### 2.5.33 Livestock Farms over 3 years

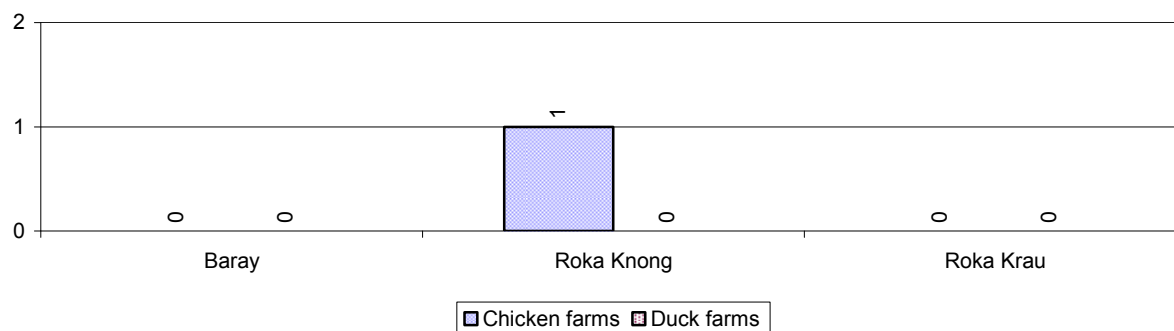
Description	2006	2007	2008
Number of cattle/buffalo farms	0 farm(s)	0 farm(s)	53 farm(s)
Number of pig farms	0 farm(s)	0 farm(s)	0 farm(s)
Number of goat/sheep farms	0 farm(s)	2 farm(s)	0 farm(s)
Number of chicken farms	1 farm(s)	1 farm(s)	1 farm(s)
Number of duck farms	0 farm(s)	0 farm(s)	0 farm(s)

### 2.5.34 Number Livestock Farms, by Commune in 2008



**Note:** Number of farms are recorded by the village chief, not by counting number of livestock in each farm

### 2.5.35 Number Chicken and Duck Farms, by Commune, for 2008



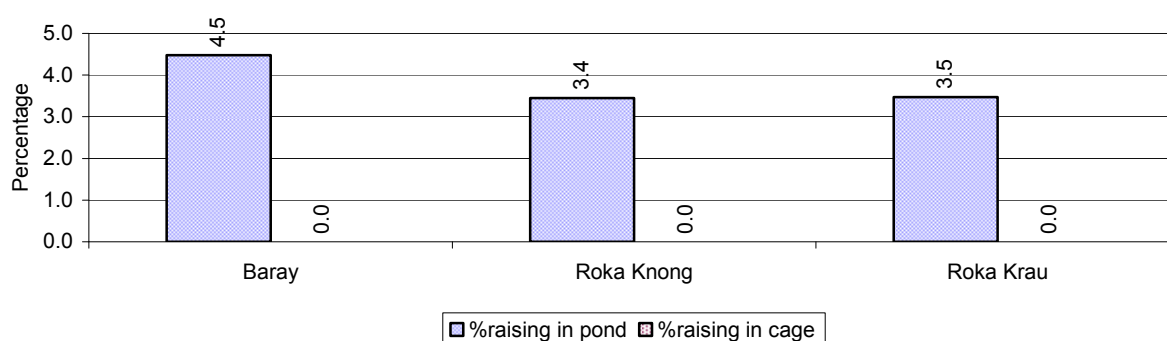
*Note: Number of farm places recorded by village chief, not by counting number of livestock in each farm*

### 2.5.36 Families raising Fish over 3 years

Description	2006	2007	2008
Total number of families raising fish	264 families	186 families	293 families
% families raising fish	4%	3%	4%
Number families raising fish in pond	264 families	186 families	293 families
% families raising fish in pond	4%	3 %	4%
Number fish pond	296 pond(s)	188 pond(s)	346 pond(s)
No. of ponds per family	1.1 pond/families	1.0 pond/families	1.2 pond/families
Number of families raising fish in cage	0 families	0 families	0 families
%families raising fish in cage	0 %	0 %	0%
Number of fish cage	0 cage(s)	0 cage(s)	0 cage(s)
No. of fish cage per family	- cage /families	- cage /families	- cage /families

*Note: % of families raising fish or fish in ponds or cages is calculated as a percentage of the total number of families.*

### 2.5.37 Percentage of Families raising Fish, by Commune, in 2008



*Note: Calculated as a percentage of the total number of families in the commune.*

### 2.5.38 Shrimp and Prawn Farming over 3 years

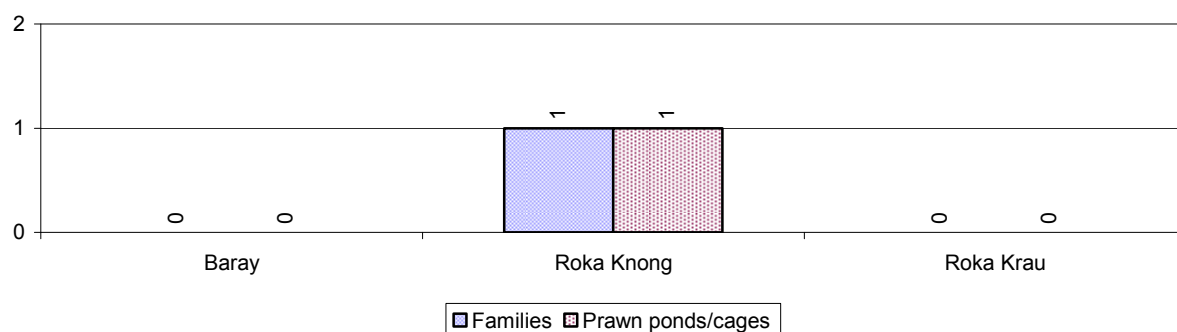
Description	2006	2007	2008
Number of families raising shrimps	0 families	0 families	0 families
% Families raising shrimps	0%	0%	0%
Number of shrimp ponds	0 pond	0 pond	0 pond
Total area raising shrimps	0 ha	0 ha	0 ha
Area per family	-ha/families	-ha/families	-ha/families
Number of families raising prawns	0 families	0 families	1 families
% families raising prawns	0%	0%	0%
Number prawn ponds	0 pond	0 pond	1 pond
Ponds per families	- pond/families	-pond/families	1pond/families
Number of prawn cages	0 cage	0 cage	0 cage
Cages per families	0 cage /families	0 cage /families	0 cage /families

**Note:** Percentage of families raising either prawns or shrimp is calculated against the number of families, who do aquaculture farming, NOT the total population.

### 2.5.39 Numbers of Families raising Shrimps and number of Shrimp Ponds, by Commune, in 2008

There were none of these in this District in 2008

### 2.5.40 Number of Families raising Prawn and Number of Prawn Ponds/Cages, by Commune, in 2008



### 3 Social Aspects

#### 3.1 Education

##### 3.1.1 Kindergarten in the District over 3 years

Description	2006	2007	2008
Number of community kindergarten schools	1 school(s)	0 school(s)	2 school(s)
Number of community kindergarten class rooms	1 room(s)	0 room(s)	2 room(s)
Number of community kindergarten classes	1 class(es)	0 class(es)	2 class(es)
Number of community kindergarten teachers	2 person(s)	0 person(s)	2 person(s)
Number of women community kindergarten teachers	2 women	0 women	2 women
Number of state and private kindergarten schools	12 school(s)	6 school(s)	12 school(s)
Number of state and private kindergarten class rooms	15 room(s)	10 room(s)	16 room(s)
Number of state and private kindergarten classes	15 class(e(s)	10 class(es)	16 class(es)
Number of state and private kindergarten teachers	16 person(s)	10 person(s)	16 person(s)
Number of women state and private kindergarten teachers	16 women	10 women	16 women

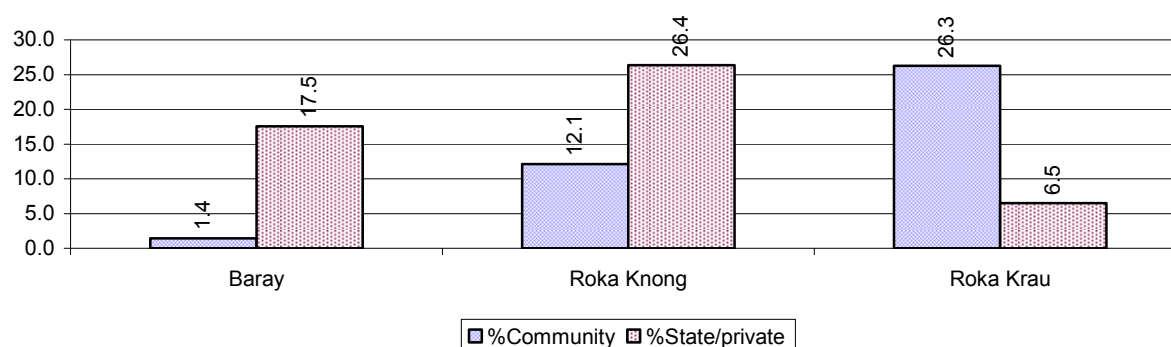
##### 3.1.2 Percentage enrolment at Kindergarten level over 3 years

*This table shows the percentage of the total 3-5 year old population attending kindergarten.*

Description	2006 %	2007 %	2008	
			%	Number
Total percentage of children, 3-5 yrs, go to kindergarten	34%	28%	30%	1,039 person(s)
Percentage of children, 3-5 yrs, go community kindergarten	11%	10%	16%	555 person(s)
Percentage children, 3-5 yrs, go state/private kindergarten	24%	18%	14%	484 person(s)

**Note:** Calculated against the total for that age group

##### 3.1.3 Percentage of Children 3-5 yrs attending Kindergarten, by Commune, in 2008



### 3.1.4 Basic Education over 3 years

#### Primary School

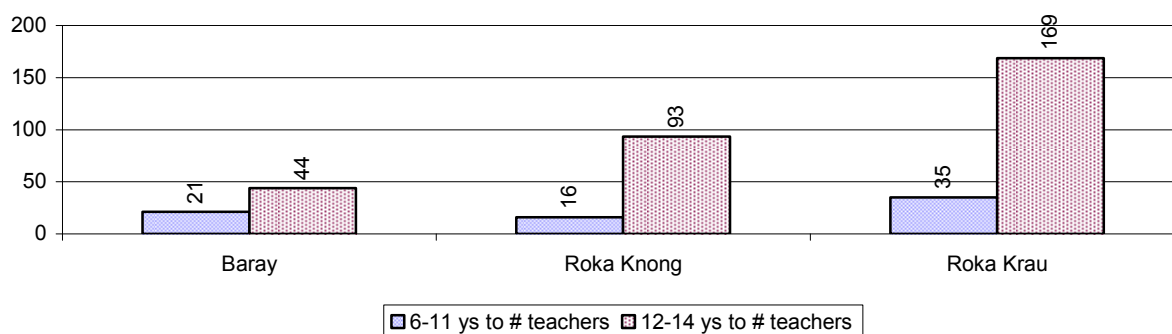
Description	2006	2007	2008
Number of primary schools	14 school(s)	25 school(s)	14 school(s)
Number of primary school rooms	197 room(s)	202 room(s)	211 room(s)
Number of primary classes	169 class(es)	174 class(es)	151 class(es)
Number of primary teachers	221 person(s)	180 person(s)	224 person(s)
Ratio of children 6-11 yrs to school	396	201	371
Ratio of children 6-11 yrs to school room	28	25	25
Ratio of children 6-11 yrs to class	33	29	34
Ratio of children 6-11 yrs to teacher	25	28	23

**Note:** According to education norm, children 6-11 yrs should attend primary school, while 12-14 yrs should be in lower secondary school, but in reality this varies.

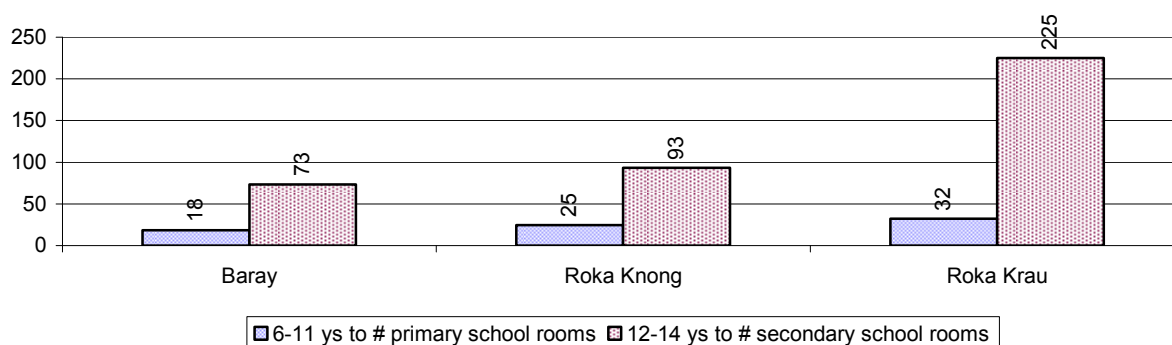
#### Lower Secondary School

Description	2006	2007	2008
Number of lower secondary schools	3 school(s)	3 school(s)	3 school(s)
Number of lower secondary school rooms	28 room(s)	30 room(s)	31 room(s)
Number of lower secondary classes	26 class(es)	28 class(es)	19 class(es)
Number of lower secondary teachers	35 person(s)	33 person(s)	43 person(s)
Ratio children 12-14 yrs to school	1,115	1,069	1,127
Ratio of children 12-14 yrs to school room	119	107	109
Ratio of children 12-14 yrs to class	129	115	178
Ratio of children 12-14 yrs to teacher	96	97	79

### 3.1.5 Ratio of 6-11 year old and 12-14 year old Children to number of Teachers, by Commune, in 2008



### 3.1.6 Ratio of 6-11 year old and 12-14 year old Children to number of School Rooms, by Commune, in 2008



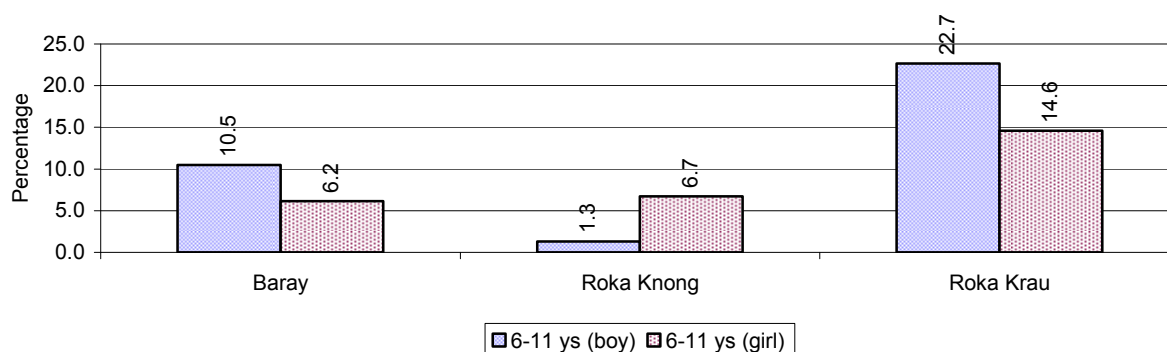
### 3.1.7 Enrolment status at Primary Level over 3 years

Description	2006 %	2007 %	2008	
			%	Number
Total children aged 6-11 years old	13%	12%	12%	5,198 person(s)
Total children aged 6-11 who are in school	91%	93%	88%	4,581 person(s)
Total children aged 6-11 who are not in school	9%	7%	12%	617 person(s)
Total girls aged 6-11 years old	12%	11%	12%	2,462 person(s)
Total girls aged 6-11 who are in school	94%	95%	90%	2,218 person(s)
Total girls aged 6-11 who are not in school	6%	5%	10%	244 person(s)
Total boys aged 6-11 years old	14%	12%	12%	2,736 person(s)
Total boys aged 6-11 who are in school	89%	90%	86%	2,363 person(s)
Total boys aged 6-11 who are not in school	11%	10%	14%	373 person(s)

**Note 1:** Percentage is calculated on the basis of the total number of children within 6-11 year age group for the first 3 rows and for the total girls and the total boys aged 6-11 yrs.

**Note 2:** Number of girls aged 6-11 who are in & not in school is calculated against the total number of girls aged 6-11 yrs. Number boys, 6-11 yrs who are in & not in school are calculated against the total number of boys aged 6-11 yrs.

### 3.1.8 Percentage of 6-11 year old Children not in School, by Commune, in 2008



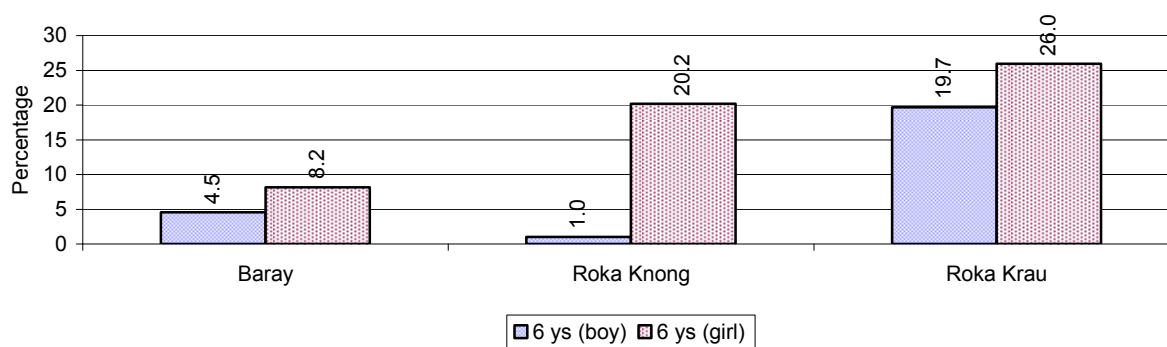
**Note:** calculated on the basis of the total number of children within 6-11 year age group in the commune.

### 3.1.9 Enrolment of 6 year old Children over 3 years

Description	2006 %	2007 %	2008	
			%	Number
Total % and number of children aged 6 years old	4%	4%	4%	1,679 person(s)
Total % of children aged 6 years old in school	88%	90%	87%	1,463 person(s)
Total % of children aged 6 years old not in school	12%	10%	13%	216 person(s)

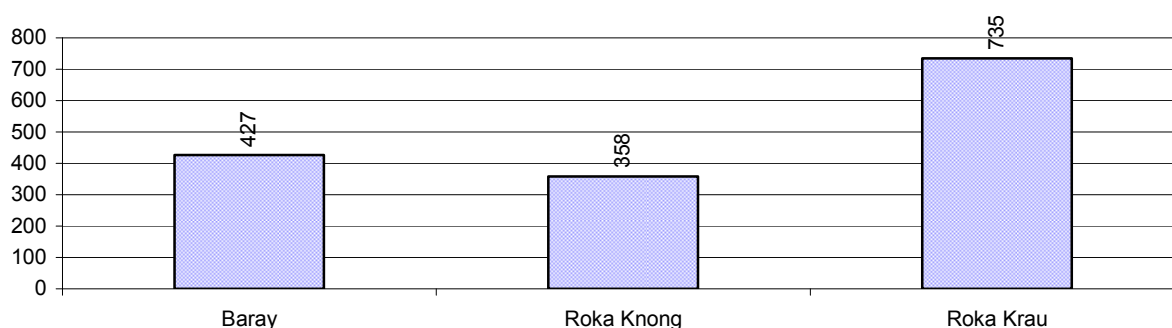
**Note:** First row calculated as a percentage of total population. Second and third row calculated as a percentage of the total number of 6 year olds.

### 3.1.10 Percentage of 6 year old Children not in School, by Commune, in 2008



*Note: Calculated as a percentage of total 6 year old population*

### 3.1.11 Number of 5 year old Children in each Commune in 2008

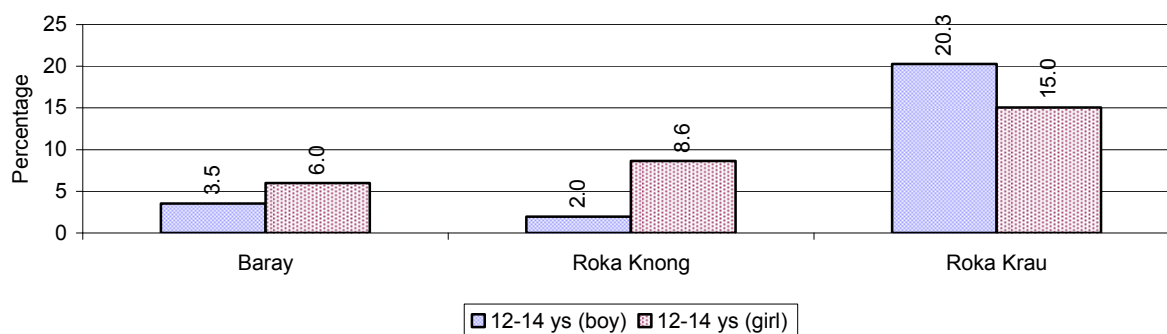


### 3.1.12 Enrolment at Lower Secondary Level over 3 years

Description	2006 %	2007 %	2008	
			%	Number
Total <b>children</b> aged 12-14 years old	8%	8%	8%	3,381 person(s)
Children aged 12-14 years old in school	93%	92%	90%	3,039 person(s)
Children aged 12-14 years old not in school	7%	8%	10%	342 person(s)
Total <b>girls</b> aged 12-14 years old	8%	7%	8%	1,652 person(s)
Girls aged 12-14 years old in school	94%	93%	90%	1,482 person(s)
Girls aged 12-14 years old not in school	6%	7%	10%	170 person(s)
Total <b>boys</b> aged 12-14 years old	8%	8%	8%	1,729 person(s)
Boys aged 12-14 years old in school	92%	91%	90%	1,557 person(s)
Boys aged 12-14 years old not in school	8%	9%	10%	172 person(s)

*Note: Percentage is calculated on the basis of number of the total number of children within 12-14 yrs group, except for the first row of each section which is calculated on the basis of the total population.*

### 3.1.13 Percentage of 12-14 year olds not in School, by Commune, in 2008



**Note:** Calculated as a percentage of the total 12-14 year old population in each commune

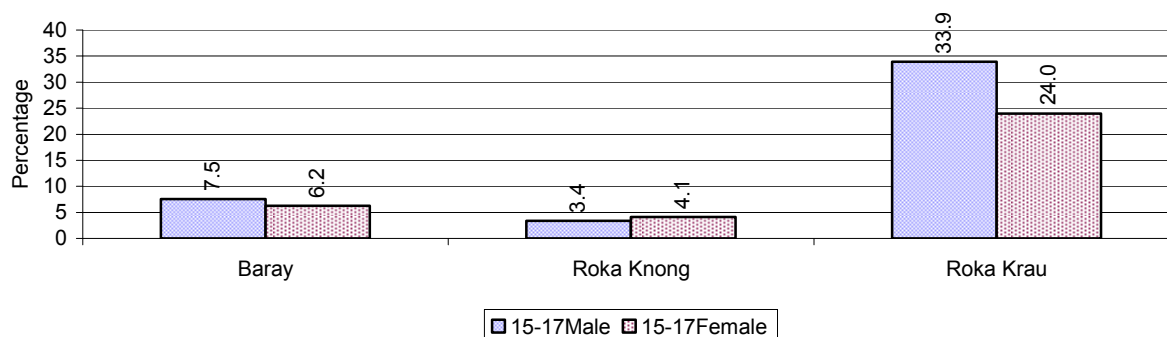
### 3.1.14 Upper Secondary Schools over 3 years

Description	2006	2007	2008
Number of upper secondary schools	2 school(s)	2 school(s)	2 school(s)
Number of upper secondary school rooms	62 room(s)	62 room(s)	62 room(s)
Number of upper secondary classes	89 class(es)	84 class(es)	83 class(es)
Number of upper secondary teachers	165 person(s)	47 person(s)	174 person(s)
Ratio of 15-17 yr olds to number of school	1,663	1,728	1,914
Ratio of 15-17 yr olds to number of school room	54	56	62
Ratio of 15-17 yr olds to number of classes	37	41	46
Ratio of 15-17 yr olds to number of teacher	20	74	22

### 3.1.15 Enrolment of 15-17 year old teenagers over 3 years

Description	2006	2007	2008
Number of teenage, 15-17 years old	3,325 person(s)	3,456 person(s)	3,828 person(s)
Number of teenage, 15-17 years old, who are not studying	449 person(s)	567 person(s)	574 person(s)
Percentage of teenage, 15-17 years old not studying	14%	16%	15%

### 3.1.16 Percentage of 15-17 year old Teenagers not at School, by Commune, in 2008





**3.1.17 Literacy Classes as of 2008**

Literacy classes	Organized by:		Other Program(s)	Total
	PDoEYS	NGOs		
Number of On-going literacy classes	0 class(es)	0 class(es)	0 class(es)	0 class(es)
Number of literacy students in on-going classes	0 person(s)	0 person(s)	0 person(s)	0 person(s)
Completed literacy class(es)	0 classes	0 classes	0 classes	0 classes
Number of literacy students that have completed literacy classes	0 person(s)	0 person(s)	0 person(s)	0 person(s)
Number of students that passed	0 person(s)	0 person(s)	0 person(s)	0 person(s)

**3.1.18 Number of on-going and completed Literacy Classes, by Commune, in 2008**

There were no classes in this District in 2008

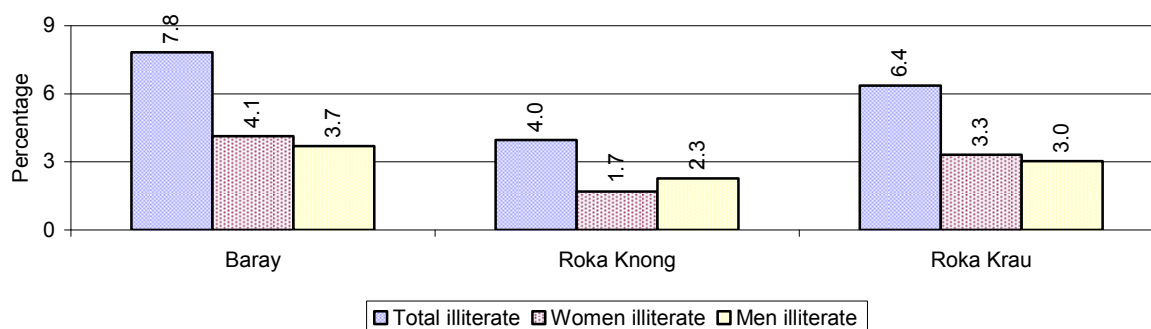
**3.1.19 Students of on-going & completed Literacy Classes, by Commune, in 2008**

There were no students who had taken or were taking literacy classes in this District in 2008

**3.1.20 Percentage of illiterate People between 15-60, over 3 years**

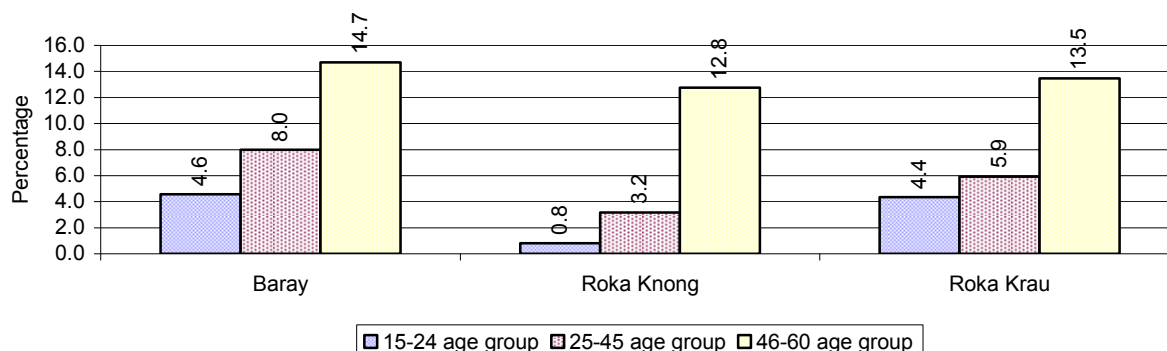
Illiteracy Status	2006 %	2007 %	2008	
			%	Number
Illiterate people, 15-60 years old	7%	7%	6%	1,612 person(s)
Illiterate females, 15-60 years old	3%	3%	3%	815 person(s)
Illiterate people, 15-17 years old	5%	4%	4%	141 person(s)
Illiterate females, 15-17 years old	2%	2%	2%	62 person(s)
Illiterate people, 18-24 years old	5%	4%	3%	201 person(s)
Illiterate females, 18-24 years old	2%	2%	1%	81 person(s)
Illiterate people, 25-60 years old	8%	8%	8%	1,270 person(s)
Illiterate females, 25-60 years old	4%	4%	4%	672 person(s)

**Note:** Percentage is calculated on the basis of number of people in age each group.

**3.1.21 Percentage illiterate People among 15-60 yrs old, by Commune, in 2008**

**Note:** Percentages are calculated on the basis of number of people in that age group.

### 3.1.22 Percentage illiterate People for 15-24 yrs, 25-45 yrs and 46-60 yrs, by Commune, in 2008



**Note:** Percentage of illiterate people in each age group is calculated on the basis of number of people in that age group.

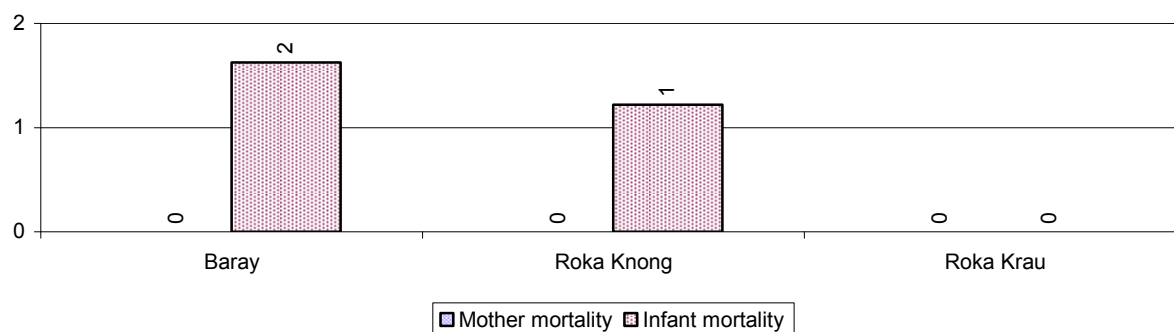
## 3.2 Health

### 3.2.1 Health Situation of Women and Children, over 3 years

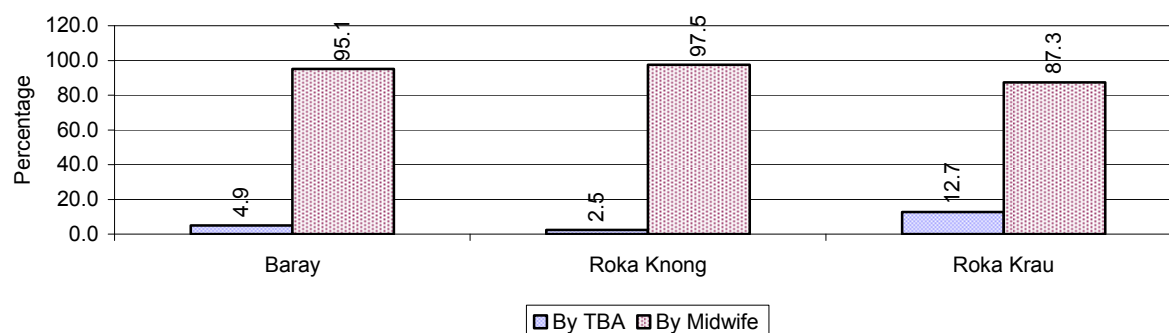
Description	2006	2007	2008
Number families with a birth during the year	509 families	476 families	474 families
Number of women who had their baby delivered by a TBA	58 person(s)	57 person(s)	31 person(s)
Percentage of women who had their baby delivered by a TBA	11 %	12 %	7 %
Number of women who had their baby delivered by a midwife	451 person(s)	419 person(s)	443 person(s)
Percentage of women had their baby delivered by a midwife	89 %	88 %	93 %
Number of mothers who died within 1 month of giving birth	1 person(s)	0 person(s)	0 person(s)
Mothers who died within 1 month of giving birth per 100,000 families having a delivery	196	0	0
Number of infants born during the year	509 person(s)	476 person(s)	474 person(s)
Number of Infants who died within 1 month	8 person(s)	1 person(s)	3 person(s)
Infants mortality within 1 month per 1,000 births	16	2	6
Number of children who died below the age of 5.	9 person(s)	14 person(s)	9 person(s)
Number of infants, aged 9-12 months, born during the year	442 person(s)	282 person(s)	331 person(s)
Nr. infants, aged 9-12 months, not receiving full immunization	10 person(s)	5 person(s)	0 person(s)
% of 9-12 months infants, not receiving full immunization	2 %	2 %	0 %

**Note:** TBA = Traditional Birth Attendant

### 3.2.2 Mothers dying within 0 days to 1 month of giving Birth and Infants dying within 1 month in 2008, by Commune

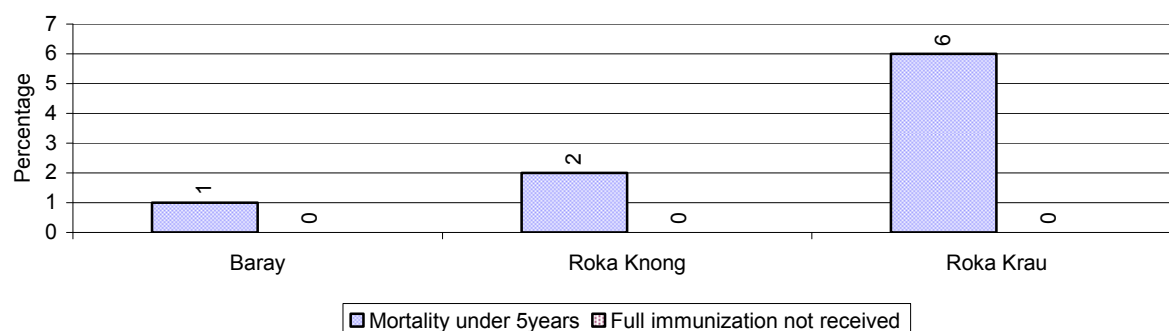


### 3.2.3 Percentage of Women delivering with a TBA or Midwife, by Commune



**Note:** Calculated as a percentage of total deliveries

### 3.2.4 Percentage of Children dying below 5 & of 9-12 months not receiving full Immunization, by Commune, in 2008



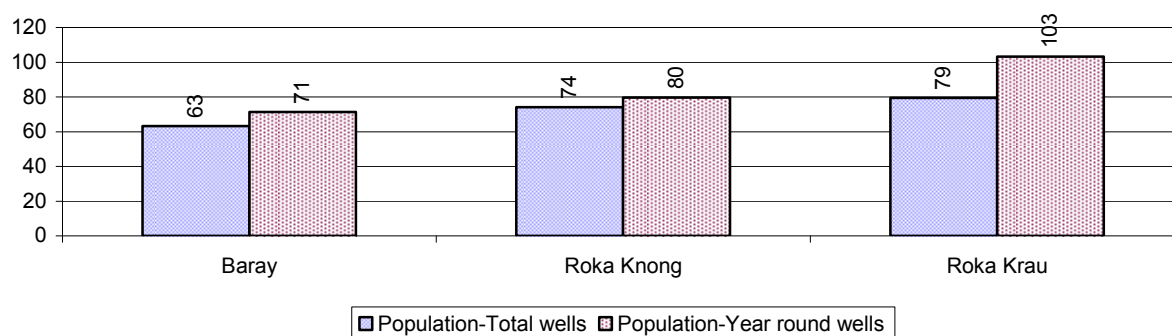
**Note:** Mortality rate calculated as a percentage of the total 5 year old population. Lack of immunization received calculated as a percentage of the total number 9-12 months olds there are

### 3.3 Water and Sanitation

#### 3.3.1 Number of different types of Wells over 3 years

Type of wells	Number of wells by year		
	2006	2007	2008
<i>Total number of pumped or mixed wells</i>	350	396	434
Year-round usable pumped or mixed wells	287	338	383
Dry season unusable pump or mixed wells	63	58	51
Pump or mixed wells needing repair/rehabilitation	58	83	60
<i>Total number of ring wells</i>	142	176	163
Year-round usable ring wells	116	152	127
Dry season unusable ring wells	26	24	36
Ring wells needing repair/rehabilitation	25	29	50
<i>Total number of unprotected dug wells</i>	1	8	23
Year-round usable unprotected dug wells	1	1	21
Dry season unusable unprotected dug wells	0	7	2

#### 3.3.2 Ratio of People to Wells, by Commune, in 2008

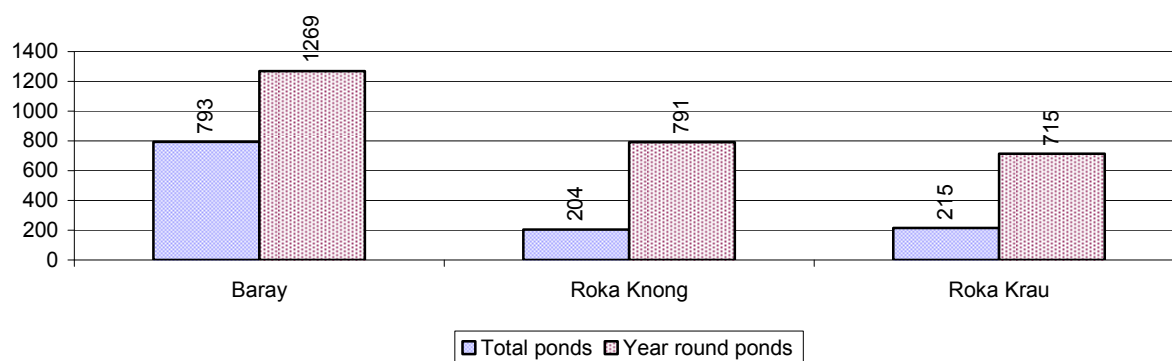


**Note:** Year-round wells excluding unprotected wells

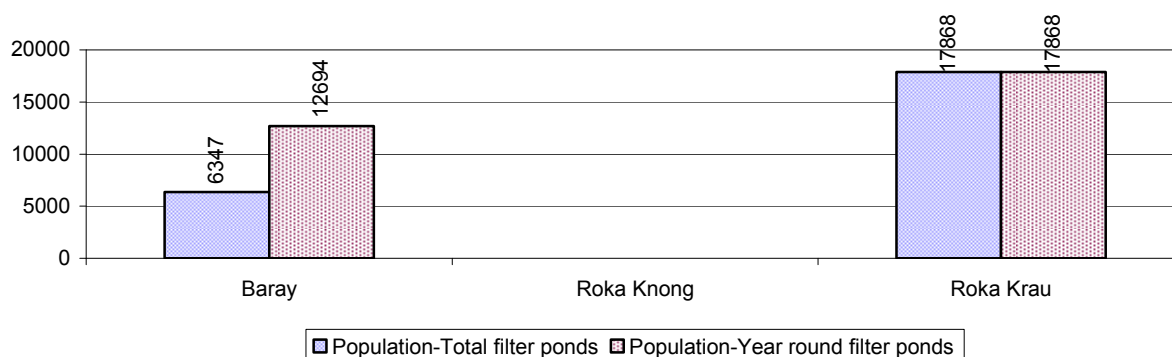
#### 3.3.3 Potable Ponds over 3 years

Type of Pond	2006	2007	2008
<i>Total number of normal-type ponds</i>	187 pond	157 pond	161 pond
Year-round usable normal-type ponds	44 pond	43 pond	51 pond
Dry season unusable normal-type ponds	143 pond	114 pond	110 pond
Normal-type ponds needing repair/rehabilitation	46 pond	63 pond	32 pond
<i>Total number of filter ponds</i>	25 pond	4 pond	3 pond
Year-round usable filter ponds	21 pond	2 pond	2 pond
Filter ponds, dry season unusable	4 pond	2 pond	1 pond
Filter ponds needing repair/rehabilitate	5 pond	2 pond	1 pond

### 3.3.4 Ratio of People to normal Ponds, by Commune in 2008



### 3.3.5 Ratio of People to Filter Ponds, by Commune, in 2008

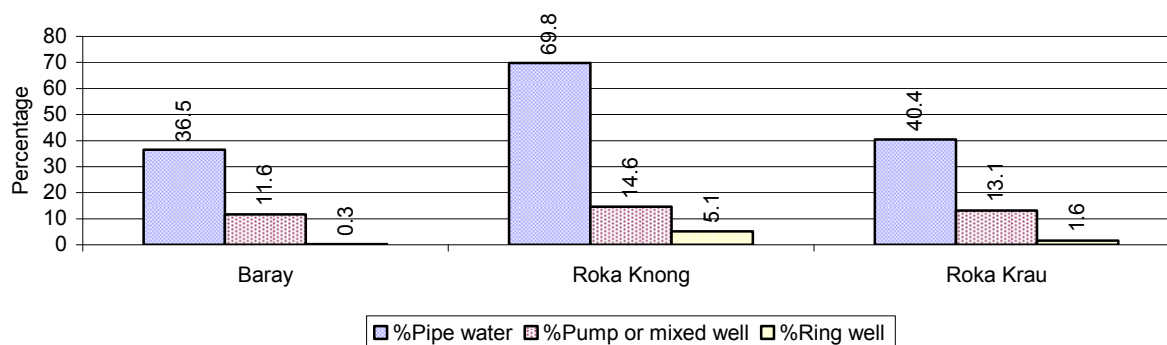


### 3.3.6 Source of potable Water for Households, over 3 years

Water sources	2006	2007	2008	
	%	%	%	Number
Families using water from purification system	41%	41 %	48 %	3,736 families
Families using water from pump, mixed wells	26%	14 %	13 %	1,022 families
Families using water from ring wells and open dug wells	2%	6 %	2 %	176 families
Families using water from pond	24%	29 %	26 %	2,001 families
Families using water from rain water storage	2%	2 %	1 %	95 families
Families using water from rivers, lakes, natural ponds and reservoirs	6%	9 %	10 %	749 families

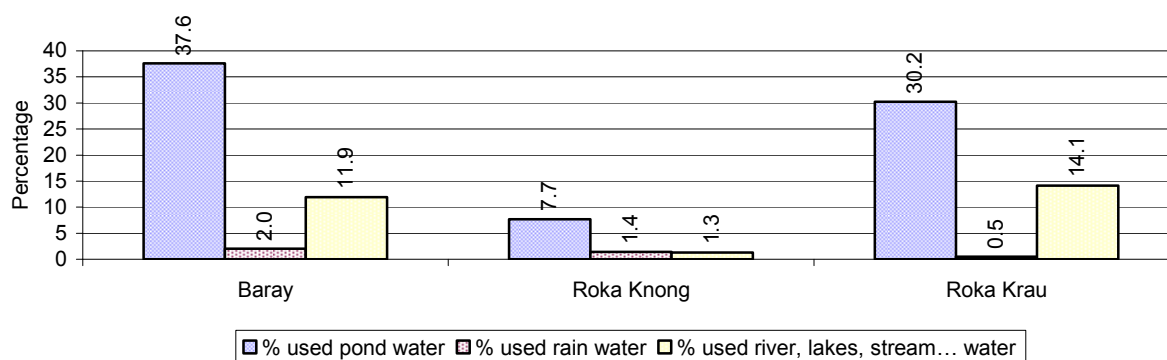
**Note:** Calculated as a percentage of the total number of families.

### 3.3.7 Percentage Families using different Water Sources, by Commune, in 2008



**Note:** Calculated as a percentage of the total number of families in each commune

### 3.3.8 Percentage Families using Water from Rain Water Storage, Ponds and natural Sources (rivers/lakes/natural ponds/reservoirs), by Commune, 2008



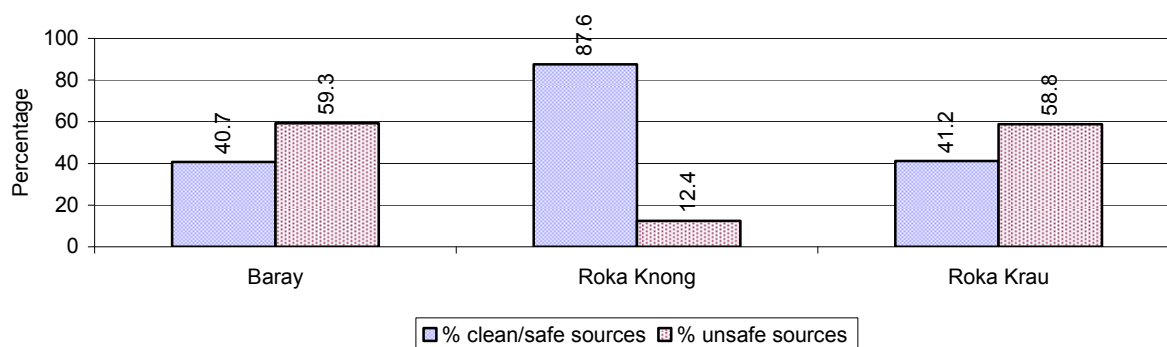
**Note:** Calculated as a percentage of the total number of families in each commune

### 3.3.9 Drinking Water Sources in the dry Season over 3 years

Percentage Families that get drinking water from:	2006 %	2007 %	2008	
			%	Number
from clean/safe sources	61 %	60 %	55 %	4,271 families
from unsafe sources	39 %	40 %	45 %	3,508 families

**Note:** Calculated as a percentage of the total number of families.

### 3.3.10 Percentage Families using safe and unsafe Water Sources in the dry Season, by Commune, in 2008



**Note:** Calculated as a percentage of the total number of families in each commune.

### 3.3.11 Drinking Water Purification by Households, over 3 years

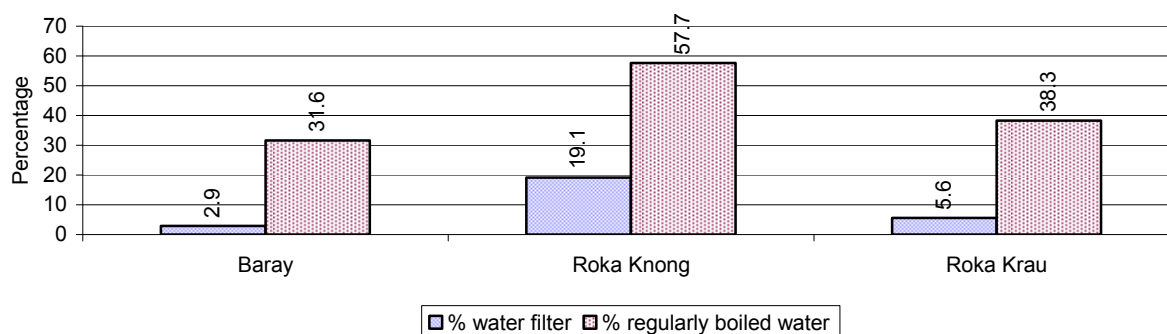
This table shows the different ways families make water safe for drinking.

Families, who:	2006	2007	2008	
	%	%	%	Number
Filter water for drinking	3%	15%	9 %	687 families
Boil water for drinking	40%	45%	42 %	3,272 families

**Note:** Calculated as a percentage of the total number of families

### 3.3.12 Percentage Families filtering Water or regularly boiling Water, by Commune, in 2008

This graph shows the different ways families make drinking water safe.



**Note:** Calculated on as a percentage of the total number of families in each commune.

### 3.3.13 Families' access to Water, over 3 years

Families access to water	2006	2007	2008	
	%	%	%	Number
Families with water at home or in less than 150m	44%	36%	40 %	3,088 families
Families with water 150m or more away from home	17%	9%	8 %	601 families

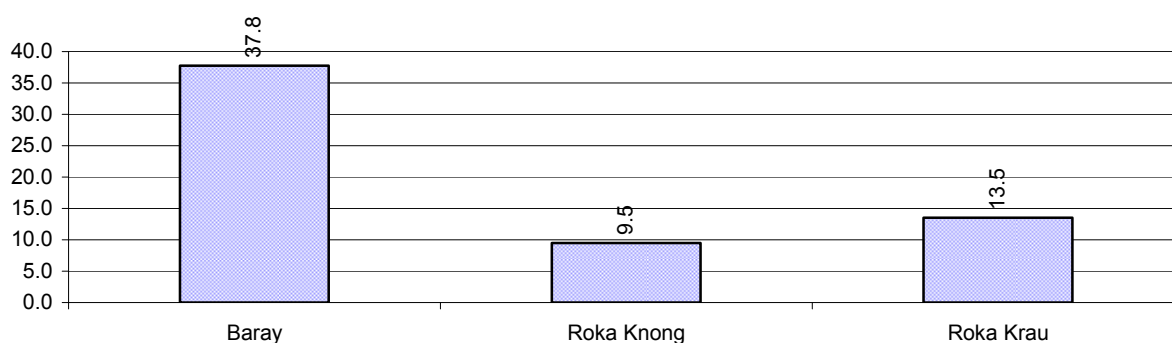
**Note:** Calculated as a percentage of the total number of families

### 3.3.14 Ratio of people to Latrines over 3 years

Description	2006	2007	2008	
	Ratio	Ratio	Ratio	Number
Ratio of people to latrines	17.3	15.9	14.4	2,996.0

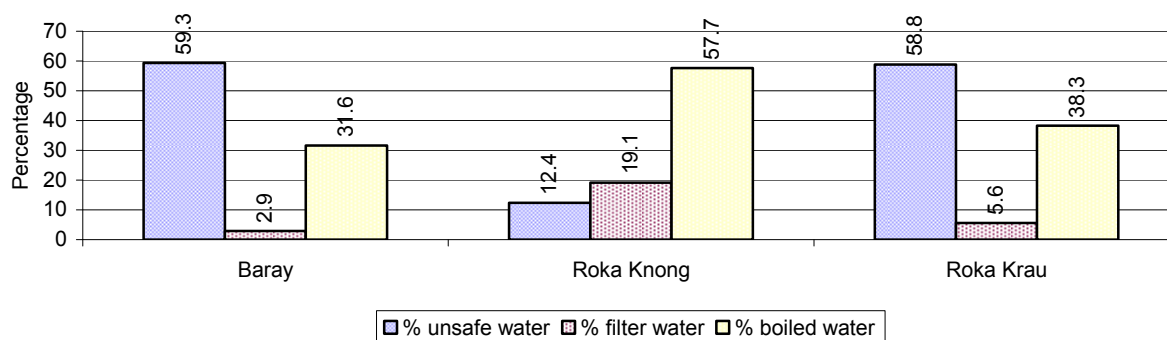
**Note:** Ratio calculated by dividing the number of houses with latrines by the total population

### 3.3.15 Ratio of People to Latrines, by Commune, in 2008



**Note:** Ratio calculated by dividing the number of houses with latrines by the total population in a Commune.

### 3.3.16 Percentage of Families drinking boiled, filtered or unsafe Water, by Commune, in 2008



**Note:** Calculated as a percentage of the total number of families in each commune.

## 3.4 Vulnerable groups

### 3.4.1 Vulnerable Groups in need of special Protection over 3 years

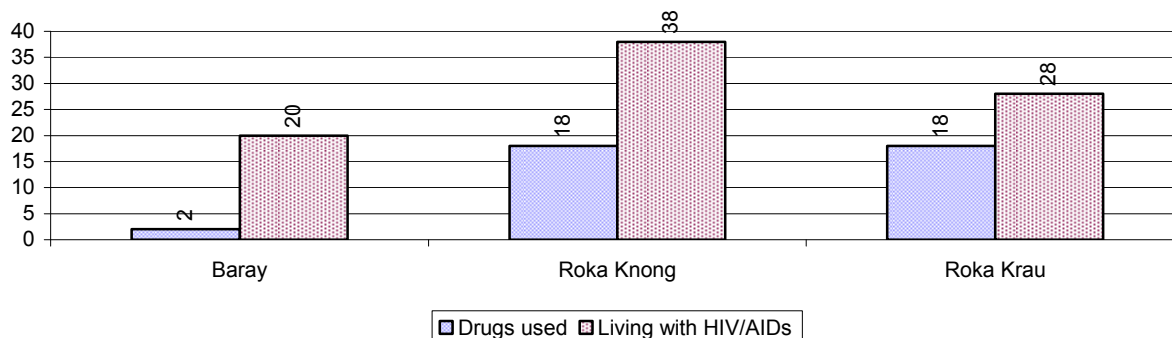
Vulnerable groups	2006	2007	2008
Victims of sexual abuse	2 person(s)	0 person(s)	0 person(s)
Victims of human trafficking	0 person(s)	0 person(s)	0 person(s)
Families with family member(s) using drugs	31 families	22 families	38 families
Families with family member(s) living with HIV/AIDS	71 families	84 families	86 families
Children under 18 yrs old whose parent died of AIDS	92 person(s)	91 person(s)	123 person(s)
Orphaned/abandoned children under 18 yrs old (all cases)	187 person(s)	188 person(s)	183 person(s)
Elderly persons without guardian	69 person(s)	105 person(s)	114 person(s)
Disabled people able to earn an income	41 person(s)	47 person(s)	68 person(s)
Disabled people unable to earn an income	52 person(s)	73 person(s)	77 person(s)
Disabled people under 18 yrs old	39 person(s)	44 person(s)	49 person(s)
Victims of natural disasters	20 families	29 families	75 families
Victims of land mines and unexploded weapons	7 person(s)	9 person(s)	9 person(s)



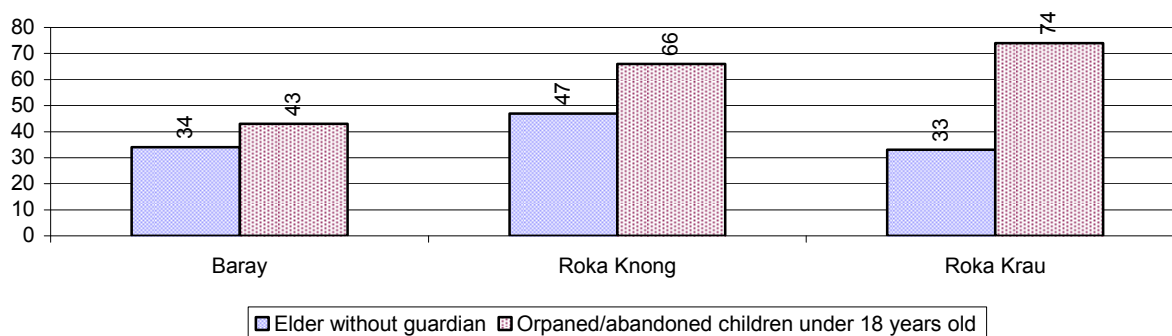
### 3.4.2 Registered Victims of sexual Abuse or Trafficking, by Commune, for 2008

There were no sexual abuse or trafficking in this District in 2008

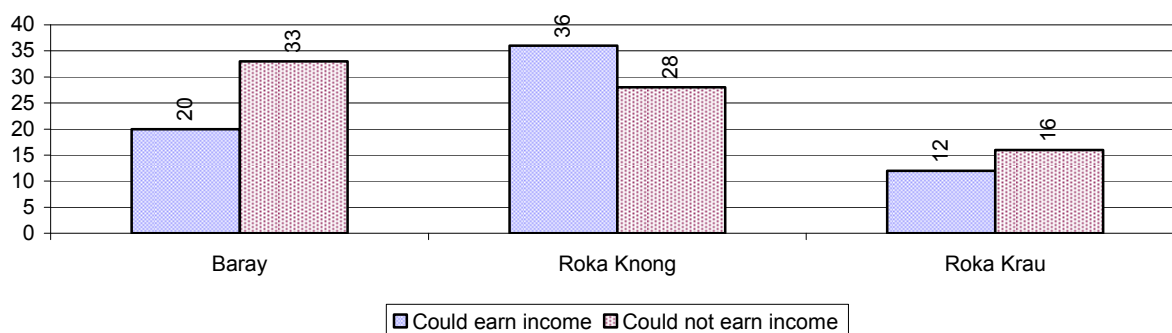
### 3.4.3 Registered Families with Member(s) using Drugs or living with HIV/AIDS, by Commune, for 2008



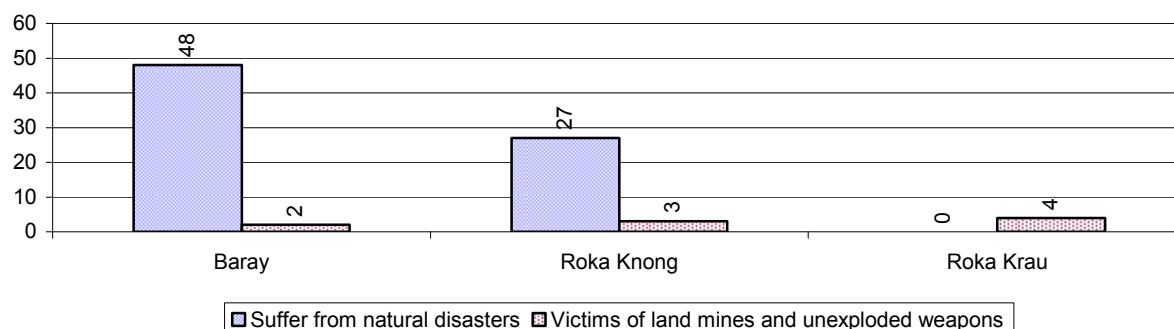
### 3.4.4 Elderly Persons without a Guardian and orphaned/abandoned Children under 18 years old, by Commune, for 2008



### 3.4.5 Number of disabled People who could or could not earn an Income, by Commune, for 2008



### 3.4.6 Number of Families who suffered from natural Disasters, and number of Victims of Land Mines and unexploded Weapons, by Commune, in 2008



## 3.5 Migration

### 3.5.1 Migration over 3 years

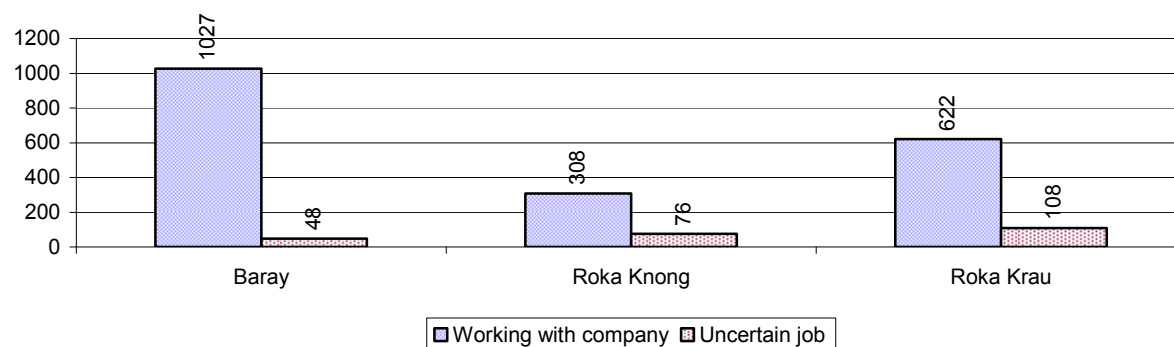
Description	2006	2007	2008
Number of families permanently in-migrated	56 families	47 families	58 families
Total number of people	248 person(s)	189 person(s)	214 person(s)
Total number of female	129 person(s)	93 person(s)	113 person(s)
Number of families permanently out-migrated	55 families	43 families	42 families
Total number of people	254 person(s)	218 person(s)	169 person(s)
Total number of female	121 person(s)	100 person(s)	83 person(s)
Number of families staying temporarily	122 families	72 families	59 families
Total number of people	278 person(s)	233 person(s)	181 person(s)
Total number of female	138 person(s)	124 person(s)	110 person(s)

### 3.5.2 Job Migration

Description	2006	2007	2008
Number of people migrated to work with company/factory	7%	8%	9%
Number of people migrated to work, but have uncertain jobs	1%	2%	1%

**Note:** Calculated as a percentage of the total population of 18-60 year olds

### 3.5.3 Number of People working outside their home Villages in a Company/Factory or with an uncertain Job in 2008

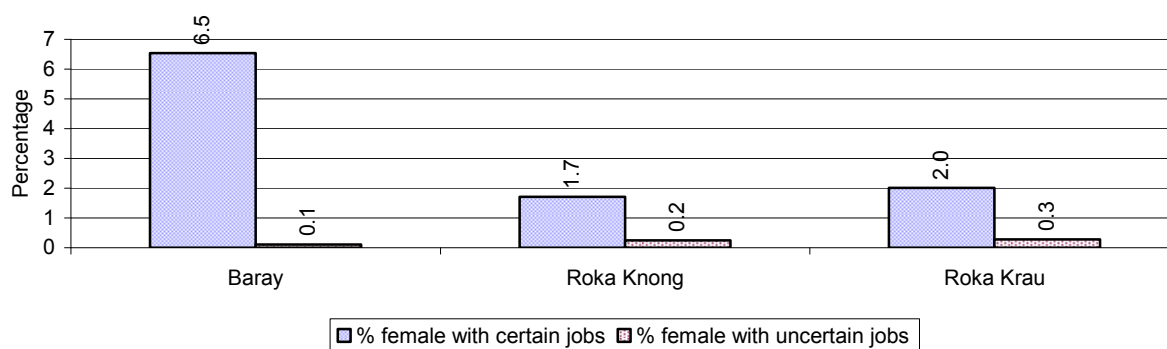


### 3.5.4 Female migration over 3 years

Description	2006 %	2007 %	2008	
			%	Number
Total number of migrants	4.3%	5.1%	5.1%	2,189 person(s)
Number of female migrants	3.3%	3.5%	3.5%	1,500 person(s)
Total number of migrants, who go to work with company/factory (with certain jobs)	3.6%	4.2%	4.5%	1,957 person(s)
Number of female migrants with certain jobs	2.9%	3.1%	3.3%	1,406 person(s)
Total number of migrants with uncertain jobs	0.7%	0.9%	0.5%	232 person(s)
Number of female migrants with uncertain jobs	0.4%	0.4%	0.2%	94 person(s)

**Note:** Calculated as a percentage of the total population

### 3.5.5 Percentage female Migrants with certain and uncertain Jobs, by Commune, in 2008



**Note:** Calculated as a percentage of the total population of the commune

## 4 Natural Resources and Environment (NRE)

### 4.1 Families involved with NRE issues over 3 years

Description	2006 %	2007 %	2008	
			%	Number
Families living with forest by products	0 %	0 %	0 %	0 families
Families living in a protected area	0 %	0 %	0 %	0 families
Houses with access to garbage collection service	6 %	4 %	2 %	147 families
Families affected by environmental pollution	1 %	0 %	1 %	110 families
Families using chemical fertilizer	54 %	56 %	53 %	4,102 families
Families using chemical pesticide	34 %	46 %	43 %	3,340 families

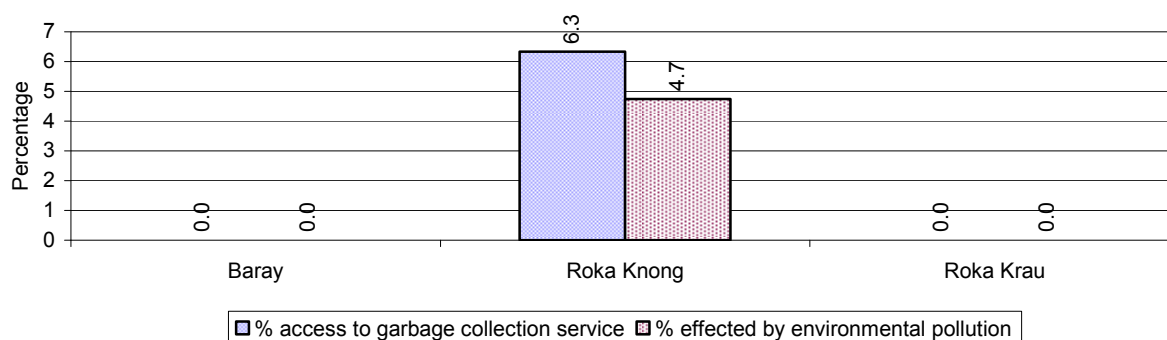
**Note:** Calculated as a percentage of the total number of families

### 4.2 Percentage of Families involved with Natural Resource issues, by Commune, for 2008

There were no families involved with natural resource issues in this District in 2008

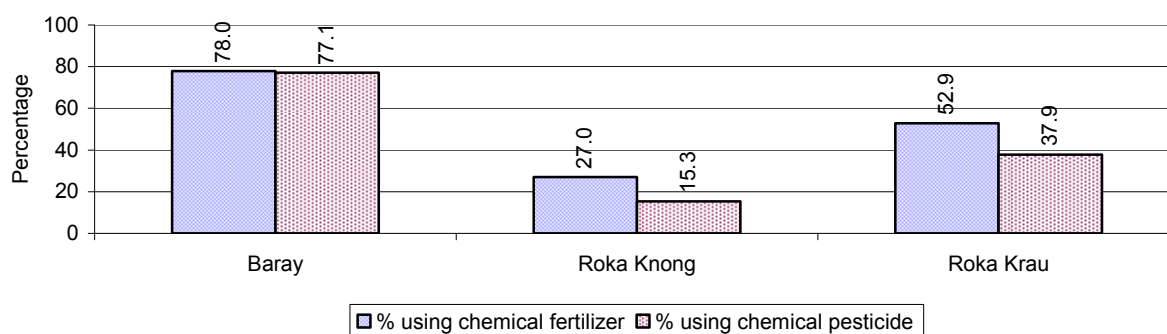
**Note:** Calculated as a percentage of the number of families in each commune

### 4.3 Percentage Houses with access to Garbage collection and Families affected by environmental Pollution, by Commune, for 2008



**Note:** Garbage collection is calculated as a percentage of the total number of houses in each commune and families affected by environmental pollution is calculated as a percentage of the total number of families in each commune.

### 4.4 Percentage Families using chemical Fertilizer and chemical Pesticides, by Commune, for 2008



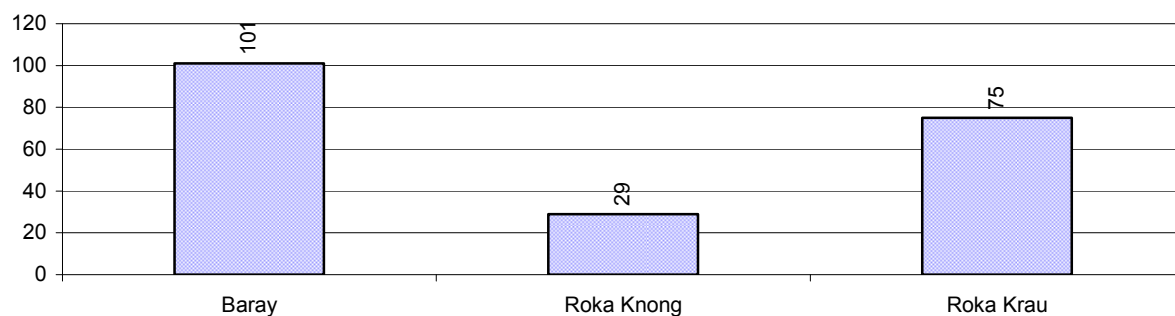
**Note:** Calculated as a percentage of the total number of families in each commune

## 5 Administration and Security

### 5.1 Birth Registration across 3 years

Description	2006	2007	2008
Number of infants to be registered	501 person(s)	475 person(s)	471 person(s)
Number of unregistered infants the year	86 person(s)	246 person(s)	205 person(s)
Percentage of infants unregistered	17 %	52 %	44 %

### 5.2 Number of unregistered Infants born in 2008, by Commune

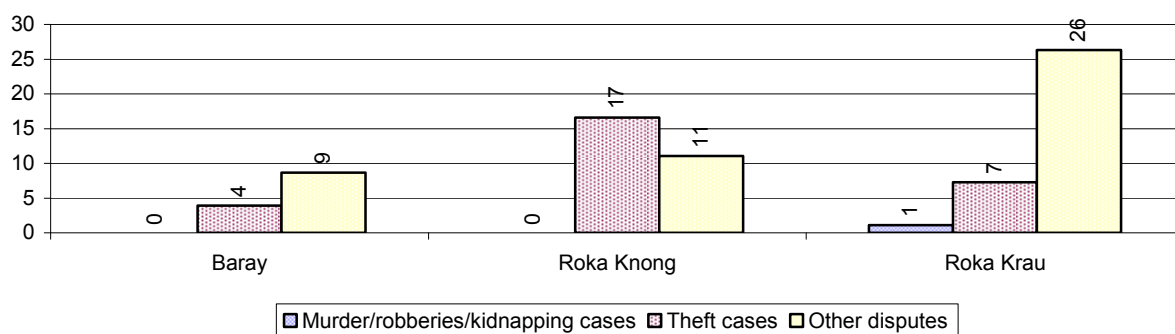


### 5.3 Registered criminal Cases over 3 years

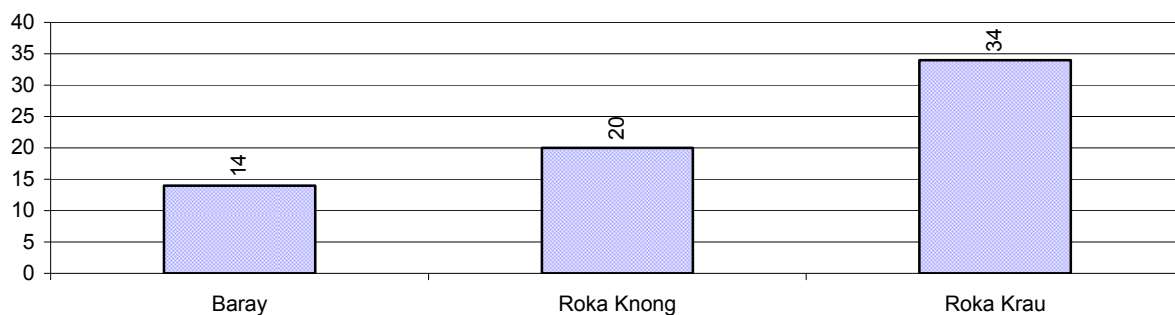
Description	2006	2007	2008
Murders, robberies and kidnapping cases	17 case(s)	0 case(s)	2 case(s)
Theft cases	131 case(s)	65 case(s)	39 case(s)
land dispute cases	112 case(s)	54 case(s)	68 case(s)
Other disputes cases	120 case(s)	105 case(s)	72 case(s)

*Note: this reflects only registered criminal cases*

### 5.4 Registered criminal Cases per 10,000 people, by Commune, for 2008



### 5.5 Number of registered Land Disputes, by Commune, in 2008

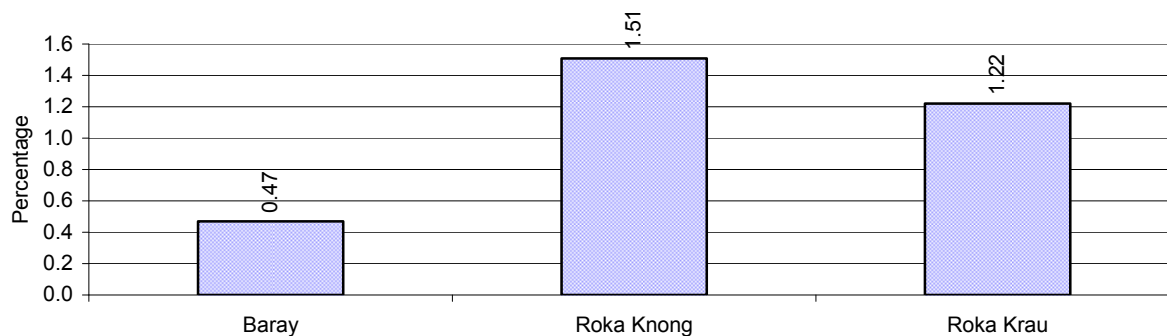


## 6 Gender

### 6.1 Registered Domestic Violence over 3 years

Description		2006	2007	2008
Families experiencing domestic violence		136 families	114 families	84 families(s)
% families experiencing domestic violence		2 %	2 %	1 %
Domestic violence cases reported by village chiefs		15 case(s)	22 case(s)	46 case(s)
Type	Physical violence	5 case(s)	15 case(s)	37 case(s)
	Sexual violence	1 case(s)	0 case(s)	1 case(s)
	Mental violence	0 case(s)	5 case(s)	6 case(s)
	Household economic violence	9 case(s)	2 case(s)	2 case(s)
Number of administrative decisions on domestic violence		0 case(s)	0 case(s)	24 case(s)
% of administrative decisions on domestic violence		0 %	0 %	52 %

### 6.2 Percentage of registered cases of Families experiencing domestic Violence, by Commune, in 2008



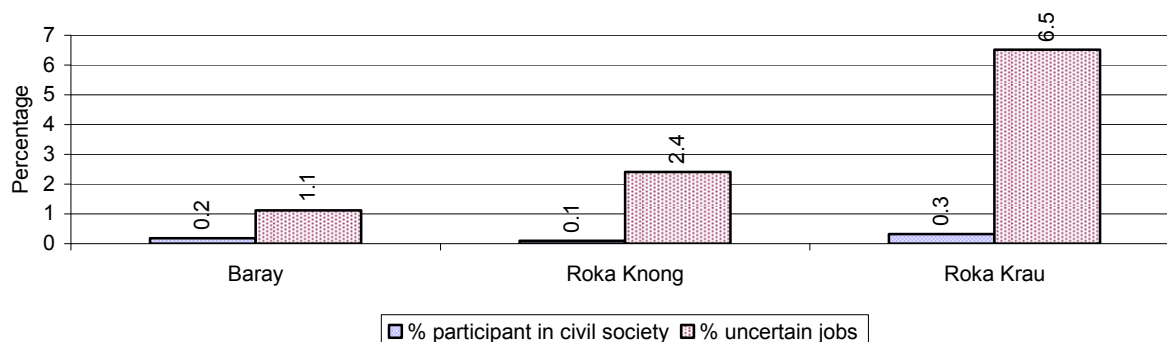
**Note:** Calculated as a percentage of the total number of families in each commune

### 6.3 Women's involvement over 3 years

Description	2006 %	2007 %	2008	
			%	Number
People participating in civil society	1%	0%	1%	229 person(s)
Women participating in civil society	0%	0%	0%	93 person(s)
People, 18-60 yrs, with uncertain/irregular jobs	2%	2%	5%	1,195 person(s)
Women, 18-60 yrs, with uncertain/irregular jobs	1%	1%	4%	841 person(s)

**Note:** Participation can be in NGOs, CBOs, credit groups, women's unions, parties and other civil society organizations. The first section is calculated as a percentage of the total population. The second section is calculated as a percentage of the total 18-60 year old population.

#### 6.4 Percentage of Female Participants in Civil Society and of 18-60 year women with uncertain Jobs, by Commune, in 2008



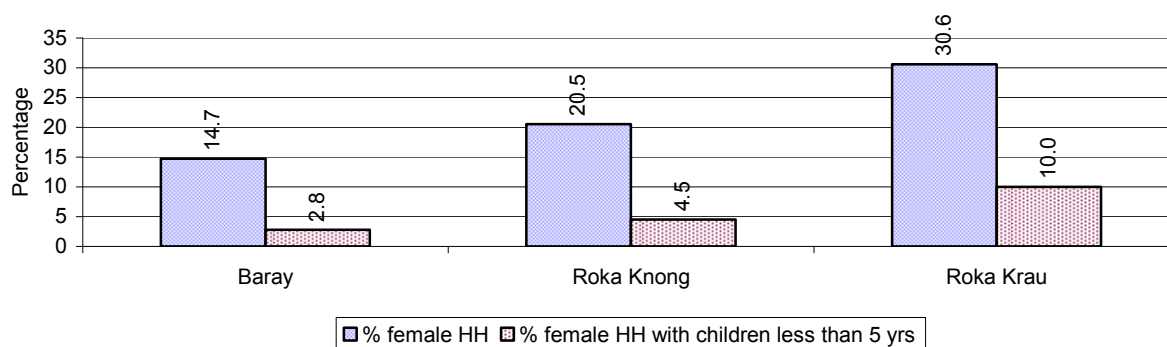
**Note:** Percentage of female participants in civil society is calculated as a percentage of the total population per commune. The percentage of 18-60 years old women with uncertain jobs is calculated as a percentage of the total 18-60 year old population per commune.

#### 6.5 Female-headed Households over 3 years

Families with:	2006	2007	2008	
	%	%	%	Number
Households in which a woman is the family head	25%	23%	23%	1,774 families
Households in which a woman is the family head with children of less than 5 yrs	6%	5%	6%	482 families

**Note:** Calculated as a percentage of the total number of families

#### 6.6 Percentage female-headed Households and with Children of less than 5 years old, by Commune, in 2008



**Note:** Calculated as a percentage of the total number of families in each commune  
HH: Headed Household

## 7 Indigenous People in the District

### 7.1 Ethnic Minorities in the District over 3 years

Race of indigenous	2006		2007		2008	
	# families	# population	# families	# population	# families	# population
Phnong	0 families	0 person(s)	0 families	0 person(s)	0 families	0 person(s)
Kouy	0 families	0 person(s)	0 families	0 person(s)	0 families	0 person(s)
Stieng	0 families	0 person(s)	0 families	0 person(s)	0 families	0 person(s)
Mil	0 families	0 person(s)	0 families	0 person(s)	0 families	0 person(s)
Kroal	0 families	0 person(s)	0 families	0 person(s)	0 families	0 person(s)
Thmorn	0 families	0 person(s)	0 families	0 person(s)	0 families	0 person(s)
Khaonh	0 families	0 person(s)	0 families	0 person(s)	0 families	0 person(s)
Tompouonn	0 families	0 person(s)	0 families	0 person(s)	0 families	0 person(s)
Charay	0 families	0 person(s)	0 families	0 person(s)	0 families	0 person(s)
Kroeung	0 families	0 person(s)	0 families	0 person(s)	0 families	0 person(s)
Kavet	0 families	0 person(s)	0 families	0 person(s)	0 families	0 person(s)
Saouch	0 families	0 person(s)	0 families	0 person(s)	0 families	0 person(s)
Lun	0 families	0 person(s)	0 families	0 person(s)	0 families	0 person(s)
Kachak	0 families	0 person(s)	0 families	0 person(s)	0 families	0 person(s)
Praov	0 families	0 person(s)	0 families	0 person(s)	0 families	0 person(s)
Others	0 families	0 person(s)	0 families	0 person(s)	0 families	0 person(s)
<b>Total</b>	0 families	0 person(s)	0 families	0 person(s)	0 families	0 person(s)

**Note:** "Others" refer to other ethnic groups which are not listed.

### 7.2 Other Minorities in the District over 3 years

Minority	2006		2007		2008	
	# families	# population	# families	# population	# families	# population
Khmer Islamic	6 families	51 person(s)	65 families	326 person(s)	68 families	311 person(s)
Vietnamese	11 families	58 person(s)	11 families	74 person(s)	4 families	21 person(s)
Laos	0 families	0 person(s)	0 families	0 person(s)	0 families	0 person(s)

**Note:** Number of indigenous and minority population are additional data, so some village may not recorded.



## **SECTION C: PLANS AND PROJECTS**



## 8 Priorities and Plans

### 8.1 Priorities of Commune Councils for 2009 in the District by Sector

The District Priority Activity Matrix (DPAM) data are taken from the CDPD. The DPAM is used for the District Integration Workshop (DIW), to show what kind of projects the commune has proposed in their Commune Investment Plan (CIP) for 2009. Donors, departments and other agencies then consider which projects they want to support and which projects they are not interested in. This results in Temporary Agreements between the Commune Council and the Supporter (NGO, Department, private donor, etc), as shown in table 8.2

Supporter (NGO, Department, private donor, etc), as shown in table 6.2					
No.	Project Name	Baray 210801	Roka Knong 210802	Roka Krau 210803	Req.Project Total
Economic					
1	Compost fertilizer training		5 training	8 training	2
2	Chemical and pesticide application training	14 training	8 training	14 training	4
3	IPM training			25 training	1
4	Mushroom growing training			5 training	1
5	Animal raising training			5 training	1
6	Rice seed request			18 T	1
7	Fruit trees seedling request	248 Tree			1
8	Chicken request	20 Head			1
9	Fish fingerling request	4000 Head	103000 Head	300000 Head	3
10				5 km	1
11			3 place	11 place	2
12		1200 m	2 km		2
13		1 place			1
14		130 m			1
15		1300 m	1 km	1 km	3
16	Livestock bank	14 Head			1
17	Electricity supply	6 km			1
Social					
1	Family planning		12 training		1
2	HIV/AIDS awareness education	2 training			1
3	HIV/AIDS infected person assistance	6 time			1
4	Nutrition awareness education			14 training	1
5	Transmitted disease education and prevention		12 training		1
6	Latrine construction	10 toilet	100 toilet	70 toilet	3
7	Latrine use education	14 training		14 training	2
8	Sanitation education	14 training			1

District Data Book 2009: Development Plans and Projects

No.	Project Name	Baray	Roka Knong	Roka Krau	Req.Project
		210801	210802	210803	Total
9	KMeragppl;meFüa)aycMeraHTwks¥at	70 Container		28 Container	2
10	KMeragpÄt;pÄg;Twks¥at	2 training		14 training	2
11			12 place	14 well	2
12		15 well			1
13		1 place			1
14	School building		2 building		1
15	Scholarship provision to poor pupils		141 person		1
16	Vocational training		0 training	1 training	3
17	Engine/car repairing skill training	1 training			1
18	Bicycle/motorcycle/radio repairing skill training			1 training	1
19	Food for work needs	4 time			1
<b>NREM</b>					
1	Environmental awareness and law education		10 training	14 training	2
2	Fishery law education	2 training	2 training		2
3	Environmental poster installation		7 place		1
4	Organizing environment day		2 time		1
5	Tree plantation project			3000 Tree	1
6	Illegal fishing prevention			5 training	1
7	Sewage culvert system construction/rehabilitation			1000 m	1
8	Solving rubbish problems	2 training			1
9	Public rubbish bin sitting		28 Garbage bin	10 Garbage bin	2
<b>Administration and Security</b>					
1	Land law dissemination	1 training			1
2	Gambling control/elimination activation		288 time		1
3	Stealing elimination activation		0 time		1
4	Gangs gathering educated for local security	2 training			1
5	Drug business/use prevention		365 day	5 training	2
6	Law/regulation dissemination		288 time		1
7	Information board provision/creation/built	1 place			1
8	Traffic law and public order dissemination	1 training			1
<b>Gender</b>					
1	Women role in development strengthening/dissemination		11 training		1
2	Lady makeup/hair dressing skill training			1 training	1
3	Law against domestic violence dissemination		2 training	14 training	2

**Source:** CDPD – District Priority Matrix

## 8.2 Temporary Agreements by Commune, for 2009<sup>2</sup>

At the District Integration Workshop (DIW) the Supporters (donors, agencies, private donors, NGOs, etc.) identify which projects/activities they would like to support or they put forward their own projects to be implemented in a particular commune. Once there is agreement between Commune Councils and Supporters on specific projects a **Temporary Agreement** is signed by the commune and the Supporter to show their mutual commitment to the identified projects/activities.

It is important to keep in mind that such Temporary Agreements do not necessarily result in implementation.

### 8.2.1 Temporary Agreements for 2009 as per DIW 2008 for Commune: Baray

Commune GIS	Commune	Temporary Agreements				Supporter	Funding Source	Listed in CIP befor DIW
		Project Name	Quantity	Unit	Est.Cost (K.Riels)			
Economic								
210801	Baray		14	village	0	Cambodian Red Cross		<input type="checkbox"/>
Social								
210801	Baray		12	Month	0	Swiss Red Cross		<input type="checkbox"/>
210801	Baray		2	village	0	Swiss Red Cross	PIF	<input type="checkbox"/>
210801	Baray		25	person	5320	Partner in Compassion		✓
210801	Baray	Latrine use education	5	person	2000	Partner in Compassion		✓
210801	Baray	KMeragppl;meFüa)aycMeraHTwks¥at	70	Container	3080	Partner in Compassion		✓
210801	Baray	Land law dissemination	43	training	4000	Swiss Red Cross	PIF	✓
210801	Baray		2	village	0	Swiss Red Cross	PIF	<input type="checkbox"/>
210801	Baray		0	family	0	Partner in Compassion		<input type="checkbox"/>
210801	Baray	Sanitation education	14	training	2800	Peace and Development Assistant Organization		✓
210801	Baray		12	Month	0	Swiss Red Cross		<input type="checkbox"/>
210801	Baray	KMeragppl;meFüa)aycMeraHTwks¥at	500	Container	22800	Swiss Red Cross		✓
210801	Baray	Sanitation education	43	training	4000	Swiss Red Cross		✓
210801	Baray		10	time	0	Partner in Compassion		<input type="checkbox"/>
210801	Baray		0	family	0	Partner in Compassion		<input type="checkbox"/>
210801	Baray		2	village	22800	Swiss Red Cross	PIF	✓
NREM								
210801	Baray		14	Course/year	2800	Peace and Development Assistant Organization		<input type="checkbox"/>

<sup>2</sup> Not all the data from the CDPD has been translated to English, this has resulted in some cells in the TA tables being blank.

Commune GIS	Commune	Temporary Agreements				Supporter	Funding Source	Listed in CIP befor DIW
		Project Name	Quantity	Unit	Est.Cost (K.Riels)			
Administration and Security								
210801	Baray	Latrine construction	14	village	2800	Cambodian Red Cross		✓
210801	Baray	Information board provision/creation/built	2	place	4800	Peace and Development Assistant Organization		✓

### 8.2.2 Temporary Agreements for 2009 as per DIW 2008 for Commune: Roka Knong

Commune GIS	Commune	Temporary Agreements				Supporter	Funding Source	Listed in CIP befor DIW
		Project Name	Quantity	Unit	Est.Cost (K.Riels)			
Economic								
210802	Roka Knong	Chemical and pesticide application training	10	training	2400	Peace and Development Assistant Organization		✓
210802	Roka Knong		12	village	0	Cambodian Red Cross		□
210802	Roka Knong		4	Course/year	0	Department of Tourism	PIF	□
Social								
210802	Roka Knong	Law against domestic violence dissemination	40	person	0	Partner in Compassion	PIF	□
210802	Roka Knong		5	person	0	Partner in Compassion	PIF	□
210802	Roka Knong		25	person	0	Partner in Compassion	PIF	□
210802	Roka Knong		1	Course/year	0	Department of Labor and Vocational Training	PIF	□
210802	Roka Knong		1	time	0	Department of Culture and Fine Arts	PIF	□
210802	Roka Knong		0	family	0	Partner in Compassion		□
210802	Roka Knong	Latrine construction	37	toilet	2400	Peace and Development Assistant Organization		✓
210802	Roka Knong	Latrine use education	7	Course/year	2800	Peace and Development Assistant Organization		□
210802	Roka Knong		10	time	0	Partner in Compassion		□
210802	Roka Knong		0	family	0	Partner in Compassion		□
NREM								
210802	Roka Knong	Environmental poster installation	1	place	2400	Peace and Development		✓

Commune GIS	Commune	Temporary Agreements				Supporter	Funding Source	Listed in CIP before DIW
		Project Name	Quantity	Unit	Est.Cost (K.Riels)			
						Assistant Organization		
210802	Roka Knong	Organizing environment day	1	time	2000	Peace and Development Assistant Organization		✓
210802	Roka Knong		2	Course/year	0	Department of Culture and Fine Arts	PIF	<input type="checkbox"/>
Administration and Security								
210802	Roka Knong	Land law dissemination	12	village	720	Cambodian Red Cross	PIF	<input type="checkbox"/>
Gender								
210802	Roka Knong		40	person	0	Department of Women	PIF	<input type="checkbox"/>

### 8.2.3 Temporary Agreements for 2009 as per DIW 2008 for Commune: Roka Krau

Commune GIS	Commune	Temporary Agreements				Supporter	Funding Source	Listed in CIP befor DIW
		Project Name	Quantity	Unit	Est.Cost (K.Riels)			
Economic								
210803	Roka Krau		1	Course/year	0	Provincial Training Center		<input type="checkbox"/>
210803	Roka Krau		14	village	0	Cambodian Red Cross		<input type="checkbox"/>
210803	Roka Krau		1	Course/year	0	Provincial Training Center		<input type="checkbox"/>
210803	Roka Krau		1	Course/year	0	Provincial Training Center		<input type="checkbox"/>
210803	Roka Krau		1	Course/year	0	Provincial Training Center		<input type="checkbox"/>
210803	Roka Krau		1	Course/year	0	Provincial Training Center		<input type="checkbox"/>
210803	Roka Krau		1	None	0	Provincial Training Center		<input type="checkbox"/>
Social								
210803	Roka Krau		0	family	0	Partner in Compassion		<input type="checkbox"/>
210803	Roka Krau		25	person	0	Partner in Compassion	PIF	<input type="checkbox"/>
210803	Roka Krau	Law against domestic violence dissemination	40	person	0	Partner in Compassion	PIF	<input type="checkbox"/>
210803	Roka Krau		1	person	0	Partner in Compassion	PIF	<input type="checkbox"/>
210803	Roka Krau	KMeragpÁt;pÁg;Twks¥at	14	training	2800	Peace and Development Assistant Organization		✓
210803	Roka Krau		2	Course/year	0	Provincial Training Center		<input type="checkbox"/>
210803	Roka Krau		10	time	0	Partner in Compassion		<input type="checkbox"/>

District Data Book 2009: Development Plans and Projects

Commune GIS	Commune	Temporary Agreements				Supporter	Funding Source	Listed in CIP before DIW
		Project Name	Quantity	Unit	Est.Cost (K.Riels)			
210803	Roka Krau		0	family	0	Partner in Compassion		<input type="checkbox"/>
210803	Roka Krau		1	None	0	Provincial Training Center		<input type="checkbox"/>
210803	Roka Krau		1	Course/year	0	Provincial Training Center		<input type="checkbox"/>
210803	Roka Krau	KMeragppl;meFüa)aycMeraHTwks¥at	28	Container	1232	Peace and Development Assistant Organization		✓
Administration and Security								
210803	Roka Krau	Land law dissemination	14	village	720	Cambodian Red Cross	PIF	<input type="checkbox"/>
Gender								
210803	Roka Krau	Latrine use education	2	person	2800	Department of Women		✓
210803	Roka Krau	Latrine construction	40	person	9040	Department of Women		✓
210803	Roka Krau		1	Course/year	0	Provincial Training Center		<input type="checkbox"/>

**Source:** CDPD, District Level Detail TA resulting from DIW



**8.3 Outputs, estimated and actual costs of C/S Fund Projects between 2005 and 2008, by Commune**

Commune	Project Type	Budget Year	Output		Quantity	Unit	Unit Cost MR	
			Description	Type			Estimate	Actual
Baray	Rural Transport	2005	Earth road	Repair	1.641	Km	43.47	33.45
Baray	Irrigation	2006	Pumping station	New	1	Place	27.99	27.15
Baray	Irrigation	2007	Pumping station	New	2	Place	29.53	37.73
Baray	Irrigation	2007	Canal	Repair	0.32	Km	10.03	37.73
Baray	Irrigation	2007	Fixed water pump	New	4	Pump	36.66	37.73
Baray	Rural Transport	2008	Earth road	Repair	1.757	Km	50.03	50.07
Roka Knong	Rural Transport	2005	Earth road	Repair	1.698	Km	32.83	32.75
Roka Knong	Irrigation	2006	Pumping station	New	1	Place	27.99	27.29
Roka Knong	Irrigation	2007	Small water gate	Repair	1	Place	18.91	18.82
Roka Knong	Rural Transport	2007	Gravel road	Repair	0.486	Km	26.74	26.15
Roka Knong	Rural Transport	2008	Gravel road	Repair	0.721	Km	43.74	43.73
Roka Krau	Irrigation	2005	Canal	Repair	0.44	Km	10.18	39.43
Roka Krau	Irrigation	2005	Pumping station	New	1	Place	28.52	39.43
Roka Krau	Rural Transport	2006	Gravel road	New	3.37	Km	33.40	41.26
Roka Krau	Rural Transport	2006	Single pipe culvert	New	4	Place	9.13	41.26
Roka Krau	Rural Transport	2007	Single pipe culvert	New	6	Place	9.71	13.04
Roka Krau	Irrigation	2007	Canal	Repair	1.67	Km	32.81	31.33
Roka Krau	Rural Transport	2008	Gravel road	Repair	0.409	Km	38.26	44.26
Roka Krau	Rural Transport	2008	Double pipe culvert	New	1	Place	6.04	44.26

*Source: PID***8.4 Total Expenditure on C/S Fund Projects by sector and commune between 2005 and 2008**

Sector	Total Cost in Million Riels		
	Baray	Roka Knong	Roka Krau
Irrigation	64.88	46.11	70.76
Rural Transport	83.52	102.63	98.56

*Source: PID*

**8.5 Actual 2009 C/S Fund projects by Commune**

Commune	Project Type	Project Output		Quantity	Unit	Fund Source (Riels)		
		Description	Type			Total	C/S	Local Contribution
Sangkat Baray	Rural Transport	Earth road	Repair	0.3	km	47,691,500	47,491,500	200,000
Sangkat Baray	Rural Transport	Earth road	Repair	1.167	km	47,691,500	47,491,500	200,000
Sangkat Baray	Rural Transport	Earth road	Repair	0.16	km	47,691,500	47,491,500	200,000
Sangkat Roka Knong	Rural Transport	Earth road	Repair	0.875	km	45,447,600	44,947,600	500,000
Sangkat Roka Knong	Rural Transport	Earth road	Repair	0.73	km	45,447,600	44,947,600	500,000
Sangkat Roka Krau	Rural Transport	Earth road	Repair	0.87	km	55,941,500	55,541,500	400,000
Sangkat Roka Krau	Rural Transport	Earth road	Repair	0.76	km	55,941,500	55,541,500	400,000
Sangkat Roka Krau	Rural Transport	Single pipe culvert 0.8m diameter	New	1	Place	55,941,500	55,541,500	400,000
Sangkat Roka Krau	Rural Transport	Single pipe culvert 1.0m diameter	New	1	Place	55,941,500	55,541,500	400,000

*Source: PID*

## 9 District level Projects from 2006 to 2009

District Initiative Projects (DIPs) are funded by Danida, DFID and PSDD (UNDP, DFID and SIDA).

### **Funding for 2006-2008**

Between 2006 and 2008 there were 14 provinces funded by PSDD and 10 by Danida and DFID. The list of provinces and who funded these is below

#### *Danida and DFID funded DIPs:*

Kampong Cham	Kampong Speu	Koh Kong	Kratie	Monduliri
Pursat	Ratanakiri	Siem Reap	Sihanoukville	Kep

#### *PSDD funded DIPs:*

Banteay Meanchey	Battambang	Kampong Chhnang	Kandal	Phnom Penh
Prey Veng	Svay Rieng	Takeo	Kampong Thom	Preah Vihear
Stung Treng	Kampot	Oddar Meanchey	Pailin	

### **Funding for 2009**

In 2009 there was a change to the number of provinces funded by the two streams. Danida and DFID were still funding the same 10 provinces they had been funding the previous three years, but two more provinces were added *Kampong Thom and Kampot*. Now PSDD funds 12 provinces and Danida and DFID fund 12.

## **9.1 District Initiative Infrastructure Projects from 2006 to 2009**

### **9.1.1 District Initiative Infrastructure Projects for 2006 to 2008**

*No District Initiative Infrastructure Projects were implemented in this district for 2006-2008*

### **9.1.2 District Initiative Infrastructure Projects in 2009**

*No District Initiative Infrastructure Projects have been implemented in this district for 2009*

## **9.2 District Initiative Service Projects from 2006 to 2009**

### **9.2.1 District Initiative Service Projects for 2006 to 2008**

*No District Initiative Service Projects were implemented in this district for 2006-2008*

### **9.2.2 District Initiative Service Projects in 2009**

*No District Initiative Service Projects have been implemented in this district for 2009*

### **9.3 Inter Commune Council Projects in 2008 and 2009**

#### **9.3.1 ICC Projects in 2008**

*No ICC projects in this district at this time*

#### **9.3.2 ICC Projects in 2009**

*No ICC projects in this district at this time*

**Source:** ICC project, Ministry of Interior (DoLA), -UNDP project for Local Governance – DDLG

### **9.4 Other Projects in 2008 and 2009**

#### **9.4.1 RPRP**

*There are no RPRP projects being implemented in this district or province at this time. The RPRP is only being implemented in Svay Rieng and Prey Veng*

##### **9.4.1.1 RPRP Projects from 2006 to 2008**

*No RPRP projects in this district at this time*

##### **9.4.1.2 RPRP Projects in 2009**

*No RPRP projects in this district at this time*

#### **9.4.2 Seth Korma**

##### **9.4.2.1 Seth Koma 2007**

*There are no Seth Korma projects being implemented in this district or province at this time.*

**Source:** UNICEF

##### **9.4.2.2 Seth Koma 2008**

*There are no Seth Korma projects being implemented in this district or province at this time.*

**Source:** UNICEF

##### **9.4.2.3 Seth Koma 2009**

*There are no Seth Korma projects being implemented in this district or province at this time.*

**Source:** UNICEF

## **SECTION D: SERVICES AND ORGANIZATIONS**



## **10 Infrastructure**

### **10.1 Length of and Expenditure on Roads in 2008, by District**

*There were no data available for this district at the time data collection*

### **10.2 Scale of and Expenditure on Irrigation in 2008, by District**

*There were no data available for this district at the time data collection*

### **10.3 Power Supply in 2008, by District**

*There were no data available for this district at the time data collection*

## 11 Health Facilities

Please note that the Operational District (health) boundaries are different to the administrative district boundaries. Therefore the data provided here shows the facilities, staff, NGOs etc in each Operational District within the province NOT the administrative district.

### Acronyms

<b>Com Cov</b>	Commune Covered	<b>MW2</b>	Secondary Midwives
<b>CPA</b>	Complementary Package of Activities	<b>NU1</b>	Primary Nurse
<b>Dr</b>	Doctor	<b>NU2</b>	Secondary Nurse
<b>FDH</b>	Former District Hospital	<b>OD</b>	Operational District
<b>HC</b>	Health Center	<b>Others</b>	Other Staff
<b>HC (NB)</b>	Health Center no building	<b>PHD</b>	Provincial Health Department
<b>HP</b>	Health Post	<b>Pop 04-05</b>	Population Covered 2004 or 2005
<b>MA</b>	Medical Assistant	<b>RH</b>	Referral Hospital
<b>MPA</b>	Minimum Package of Activities	<b>Vil Cov</b>	Village Covered
<b>MW1</b>	Primary Midwives	<b>VIL-HC</b>	Distance from Village to Health Center

### 11.1 Health Facilities in the Province, by Operational District

Takeo	OD	RH	HC	HP
Ang Rokar	1	1	9	1
Bati	1		13	
Daun Keo	1	1	15	
Kirivong	1	1	20	1
Prey Kabass	1		13	
<b>Total</b>	<b>5</b>	<b>3</b>	<b>70</b>	<b>2</b>

### 11.2 Health Facilities and Staff in the province, by Operational District

This table shows health facilities, staff and coverage of health facilities in each operational district.

No	Facility Name	Type	Class	Dr	Ma	Nu2	Nu1	Mw2	Mw1	Others	Com Cov	Vil Cov	Pop. 04-05
<b>Ang Rokar</b>													
1	Ang Rokar	HC	MPA	0	1	1	3	1	1	0	3	20	14,124
2	Angk Ta Saom	HC	MPA	0	1	2	0	1	1	2	1	22	14,377
3	Kus	HC	MPA	0	0	3	1	0	2	0	2	26	13,226
4	Prey Chuor	HC	MPA	0	1	2	2	1	0	0	2	17	10,830



District Data Book 2009: Services and Organizations

No	Facility Name	Type	Class	Dr	Ma	Nu2	Nu1	Mw2	Mw1	Others	Com Cov	Vil Cov	Pop. 04-05
5	Prey Sbat	HC	MPA	0	1	1	3	1	0	0	3	18	14,940
6	Ta Phem	HC	MPA	0	1	1	1	0	2	1	1	23	14,426
7	Tram Kak	HC	MPA	0	1	1	1	2	0	2	2	19	13,642
8	Trapeang Andeuk	HC	MPA	0	1	1	2	0	1	1	2	15	13,977
<b>Total:</b>				<b>0</b>	<b>7</b>	<b>12</b>	<b>13</b>	<b>6</b>	<b>7</b>	<b>6</b>	<b>16</b>	<b>160</b>	<b>109,542</b>
<b>Bati</b>													
1	Trapeang Pring	HC	MPA	0	1	1	2	0	2	0	2	25	11,505
2	Chambak	HC	MPA	0	0	0	0	0	0	0	4	15	15,785
3	Chumreahpen	HC	MPA	0	0	0	0	0	0	0	2	22	14,920
4	Daung	HC	MPA	0	0	0	0	0	0	0	4	20	17,715
5	Kandoeng	HC	MPA	0	0	0	0	0	0	0	3	20	20,263
6	Khvav	HC	MPA	0	0	0	0	0	0	0	1	18	13,522
7	Kraing Leav	HC	MPA	0	0	0	0	0	0	0	2	29	14,837
8	Lumpong	HC	MPA	0	0	0	0	0	0	0	3	15	11,769
9	Pot Sar	HC	MPA	0	0	0	0	0	0	0	1	11	10,438
10	Rovieng	HC	MPA	0	0	0	0	0	0	0	2	24	15,438
11	Samraong	FDH	MPA	0	0	0	0	0	0	0	3	13	9,108
12	Tonle Bati	HC	MPA	0	0	0	0	0	0	0	3	12	12,064
13	Tram Khna	HC	MPA	0	0	0	0	0	0	0	4	23	13,730
<b>Total:</b>				<b>0</b>	<b>1</b>	<b>1</b>	<b>2</b>	<b>0</b>	<b>2</b>	<b>0</b>	<b>34</b>	<b>247</b>	<b>181,094</b>
<b>Daun Keo</b>													
1	Trapeang Krasaing	HC	MPA	0	0	0	0	0	0	0	4	22	12,715
2	Baray	HC	MPA	0	1	1	2	1	0	1	1	14	12,223
3	Boeng Tranh	HC	MPA	0	0	5	2	0	0	1	2	15	17,761
4	Khvav	HC	MPA	0	0	1	1	0	1	0	2	15	11,570
5	Leay Bo	HC	MPA	0	0	1	2	0	0	5	1	18	15,207
6	Lumchang	HC	MPA	1	0	3	3	0	0	1	4	19	14,822
7	Oudom Sorya	HC	MPA	0	0	3	0	0	0	6	2	21	14,935
8	Prey Sloek	FDH	MPA	0	1	1	6	0	0	1	1	17	11,977
9	Roka Khnong	HC	MPA	0	3	1	4	4	1	0	1	12	11,655
10	Roka Krau	HC	MPA	3	1	0	0	1	2	1	1	14	12,845
11	Roneam	HC	MPA	0	0	2	0	0	1	0	1	12	8,761
12	Sambo	HC	MPA	0	0	0	0	0	0	0	1	10	11,933
13	Srae Ronoung	HC	None MPA	0	1	3	1	1	1	2	1	17	8,198

District Data Book 2009: Services and Organizations

No	Facility Name	Type	Class	Dr	Ma	Nu2	Nu1	Mw2	Mw1	Others	Com Cov	Vil Cov	Pop. 04-05
14	Srangae	HC	MPA	0	0	1	3	1	1	0	1	15	8,984
15	Thlork	HC	MPA	0	0	2	1	0	1	2	1	18	11,436
<b>Total:</b>				<b>4</b>	<b>7</b>	<b>24</b>	<b>25</b>	<b>8</b>	<b>8</b>	<b>20</b>	<b>24</b>	<b>239</b>	<b>185,022</b>
<b>Kirivong</b>													
1	Trea	HC	MPA	0	0	4	1	1	0	1	3	19	16,707
2	Angk Khnol	HC	MPA	0	0	1	1	0	2	0	2	15	10,127
3	Angk Krouch	HP	Nil	0	0	0	0	0	0	0	1	1	-
4	Borey Cholsar	HC	MPA	0	0	1	1	0	0	0	0	7	3,910
5	Chaon Chum	HC	MPA	0	0	4	0	1	0	0	2	14	21,359
6	Chi Khma	HC	MPA	0	0	1	2	1	1	0	3	21	13,962
7	Daung Khpos	FDH	MPA	0	0	2	3	1	0	0	1	12	6,099
8	Kamnab	HC	MPA	0	0	1	0	0	0	0	1	6	3,132
9	Kampeng	HC	MPA	0	0	0	2	1	0	0	1	13	7,124
10	Kampong Krasaing	HC	MPA	0	0	1	0	3	0	0	1	5	3,594
11	Kok Prech	HC	MPA	0	0	0	4	0	0	0	2	21	16,979
12	Kouk Pou	HC	MPA	0	0	1	1	0	1	0	1	8	9,399
13	Krapum Chhouk	HC	MPA	0	0	2	2	0	0	0	2	17	14,007
14	Phnom Den	HC	MPA	0	0	2	0	1	0	0	1	9	6,676
15	Pich Sa (Angk Prasat)	HC	MPA	0	0	2	2	1	1	0	2	19	12,403
16	Prambei Mom	HC	MPA	0	0	1	3	3	0	0	2	16	10,313
17	Prey Melong	HC	MPA	0	0	0	2	0	0	0	2	19	8,907
18	Prey Rumdeng	HC	MPA	0	0	1	4	1	1	0	2	20	17,128
19	Prey Yuthka	HC	MPA	0	0	0	1	0	0	0	2	13	5,939
20	Romenh	FDH	MPA	0	0	0	5	2	0	0	2	17	16,640
21	Sanlung	HC	MPA	0	0	1	1	1	1	0	2	16	7,709
<b>Total:</b>				<b>0</b>	<b>0</b>	<b>25</b>	<b>35</b>	<b>17</b>	<b>7</b>	<b>1</b>	<b>35</b>	<b>288</b>	<b>212,114</b>
<b>Prey Kabass</b>													
1	Som	HC	MPA	0	0	1	2	0	2	0	2	21	16,692
2	Angkor Borey	FDH	MPA	0	2	2	0	2	0	1	2	8	15,030
3	Ba Srae	HC	MPA	0	0	1	1	0	1	1	2	10	12,498
4	Champa	HC	MPA	0	0	1	1	0	1	1	3	16	12,116
5	Kampeng	HC	MPA	0	0	2	1	0	0	4	3	18	15,687
6	Kampong Reab	HC	MPA	0	0	1	2	0	0	4	1	7	5,573
7	Kok Thlok	HC	MPA	0	0	0	2	0	1	0	1	4	3,279

No	Facility Name	Type	Class	Dr	Ma	Nu2	Nu1	Mw2	Mw1	Others	Com Cov	Vil Cov	Pop. 04-05
8	Kraing Sla (Khen Lak)	HC	MPA	0	0	1	1	0	1	1	3	14	13,266
9	Ponley	HC	MPA	0	0	1	0	0	1	0	1	6	6,969
10	Prey Lvea	HC	MPA	0	0	1	3	0	1	2	4	16	16,164
11	Prey Phkoam	HC	MPA	0	0	2	0	0	1	0	1	6	9,077
12	Sla (Phnom Chiso)	HC	MPA	0	1	1	0	0	1	2	2	17	11,590
13	Tang Yab	HC	MPA	0	0	2	0	0	0	1	3	17	11,425
<b>Total:</b>				<b>0</b>	<b>3</b>	<b>16</b>	<b>13</b>	<b>2</b>	<b>10</b>	<b>17</b>	<b>28</b>	<b>160</b>	<b>149,366</b>
<b>Total All</b>				<b>4</b>	<b>18</b>	<b>78</b>	<b>88</b>	<b>33</b>	<b>34</b>	<b>44</b>	<b>137</b>	<b>1094</b>	<b>837,138</b>

Source: MEDiCAM – Infrastructure - ([http://www.medicam-cambodia.org/hsi/health\\_system/srch/index.asp?cboLcn=6&cmdSearch=Search&cboCHName=&cboType=](http://www.medicam-cambodia.org/hsi/health_system/srch/index.asp?cboLcn=6&cmdSearch=Search&cboCHName=&cboType=))

### 11.3 Deliveries in 2007 in the Province, by Operational District

OD	Deliveries	Deliveries at home		Deliveries	Total deliveries	Total deliveries
	at HC	By Health Staff	By TBAs	at RH	by Health Staff	by health staff and TBAs
Ang Rokar	2080	36	470	68	2184	2654
Bati	1650	1214	718	134	2998	3716
Daun Keo	907	1017	976	489	2413	3389
Kirivong	2835	104	686	721	3660	4346
Prey Kabass	1473	322	803	89	1884	2687
<i>Sub-total</i>	<i>8945</i>	<i>2693</i>	<i>3653</i>	<i>1501</i>	<i>13139</i>	<i>16792</i>

Source: MoH, Annual Statistics 2007

## 12 Education<sup>3</sup>

### 12.1 Schools, Classes, Students, Staff, for for all levels, for 2007/2008 by District

District	Number of Schools	Disadv. Schools	Number of Classes	Classes in Pagoda	Enrollment		Repeaters		Teaching Staff		Non-Teaching Staff		Total Staff	
					Total	Girl	Total	Girl	Total	Female	Total	Female	Total	Female
Angkor Borei	29	2	313	14	12,940	5,841	1,121	459	231	29	65	1	296	30
Bati	79	0	824	18	35,949	16,197	2,143	744	841	254	155	13	996	267
Borei Chulsa	26	0	209	0	7,776	3,428	494	214	159	25	38	4	197	29
Daunkeo	30	1	315	4	12,965	5,851	707	247	404	186	111	48	515	234
Kiri Vong	94	1	724	0	27,998	12,689	1,988	781	737	179	118	8	855	187
Koh Andet	33	0	323	5	13,579	6,185	1,342	574	344	105	70	7	414	112
Prey Kabas	63	0	645	0	27,234	12,173	2,148	768	649	167	163	14	812	181
Samrong	81	0	837	2	35,919	15,976	3,651	1,390	836	222	150	11	986	233
Traing	87	1	821	2	32,129	14,449	3,378	1,344	810	259	203	25	1,013	284
Tramkak	115	2	1,103	1	45,943	21,214	4,502	1,753	1,184	424	262	51	1,446	475
<b>Whole Province</b>	637	7	6,114	46	252,432	114,003	21,474	8,274	6,195	1,850	1,335	182	7,530	2,032
- Urban Area	30	1	315	4	12,965	5,851	707	247	404	186	111	48	515	234
- Rural Area	607	6	5,799	42	239,467	108,152	20,767	8,027	5,791	1,664	1,224	134	7,015	1,798

### 12.2 Characteristics of Schools and School Principals for 2007/2008 by Commune

Commune	Number of Schools				2 - Shift	Floating	Schools	Attached	Schools Without		Characteristics of School Principals (Incharge)			
	Pre-Sch	Primary	College	Lycee	Schools	Schools	in Pagoda	Pre-Sch	Water Sup.	Latrine	Avg. Age	Avg. Service	U.Sec+ Ed.	Female
Baray	3	5	1	0	1	0	4	3	2	0	49.8	27.2	2	4
Roka Knong	4	5	1	1	5	0	3	3	4	1	51.1	25.1	2	4
Roka Krau	4	4	1	1	2	0	0	4	8	3	55.2	27.4	1	4

<sup>3</sup> All the data for section 12 comes from the Ministry of Education, Youth and Sport (MoEYS)

**12.3 Enrolment by Level of Education, 2006/2007 by Commune**

Commune	School	Pre school		Primary School		Lower Secondary School		Upper Secondary School		Enrolment	
		Total	Female	Total	Female	Total	Female	Total	Female	Total	Female
Baray	9	126	61	2248	1032	703	296	0	0	3077	1389
Roka Knong	11	185	116	3398	1588	1916	900	1593	628	7092	3232
Roka Krau	10	212	100	1964	886	898	419	308	113	3382	1518

**12.4 Enrolment by Level of Education, 2007/2008 by Commune**

Commune	School	Pre school		Primary School		Lower Secondary School		Upper Secondary School		Enrolment	
		Total	Female	Total	Female	Total	Female	Total	Female	Total	Female
Baray	9	96	59	2003	916	712	296	0	0	2811	1271
Roka Knong	11	177	79	3269	1515	1810	837	1736	710	6992	3141
Roka Krau	10	167	83	1792	834	852	397	351	125	3162	1439

**12.5 Aspects of Enrolment for 2007/2008 by Commune**

Commune	% Repeaters (Total)			% Over-age Enrollment (Total)			% Repeaters (Girl)			% Over-age Enrollment (Girl)		
	Primary	L.Sec.	U.Sec.	Primary	L.Sec.	U.Sec.	Primary	L.Sec.	U.Sec.	Primary	L.Sec.	U.Sec.
Baray	8.5	3.8	0.0	22.9	52.0	0.0	8.2	0.3	0.0	22.3	44.3	0.0
Roka Knong	8.0	1.7	1.7	22.1	28.6	38.4	6.3	0.2	1.4	21.8	21.1	30.6
Roka Krau	6.6	3.2	11.7	24.3	35.2	43.6	5.4	1.3	10.4	21.5	33.2	37.6

**12.6 School Buildings for all schools in the District for 2007/2008, by Commune**

Commune	Total Number of		Concrete/Brick Structure		Wooden Structure		Bamboo Structure		New Buildings		Buildings Without Good		
	Buildings	Rooms	Buildings	Rooms	Buildings	Rooms	Buildings	Rooms	Repaired	Constructed	Floor	Roof	Wall
Baray	20	86	20	86	0	0	0	0	0	3	8	5	1
Roka Knong	31	160	30	149	1	11	0	0	0	0	6	4	4
Roka Krau	20	101	20	101	0	0	0	0	3	5	2	5	1

**12.7 Conditions of Classrooms and Existence of Separate School Office and Library, by Commune**

Commune	Number of Class rooms	Number of Classrooms			Classrooms Without Good			Number of Furniture needed				Schools with Separate	
		in Pagoda	New Repaired	New Constr.	Floor	Roof	Wall	Desks	Chairs	Black-board	Teacher Table	Office	Library
Baray	58	4	0	16	28	16	5	0	0	0	0	6	6
Roka Knong	112	0	0	0	30	29	20	50	0	0	6	8	5
Roka Krau	72	0	8	14	18	26	7	305	166	12	22	4	6

**12.8 Community Participation and Financing across all schools in the District for 2007/2008 by Commune**

Commune	Parent Association				Comm. Teachers	Teaching Monks	PAP Fund (Riel)		Number of Schools Obtaining Funds from				
	Exists	Held Meet	Total	Female			per Student	per School	Sch. Income	Community	Gvt. For building	Abroad	IOs/NGOs
Baray	9	8	8	1	0	0	10,953	3,591,356	0	0	0	0	0
Roka Knong	11	11	11	2	0	0	15,238	9,131,200	0	1	0	1	0
Roka Krau	9	9	18	2	0	0	13,688	5,199,675	1	0	0	1	0

**12.9 Percentage Student Flow Rates and Graduation by level 2006/2007, by Commune**

Commune	Primary Level (Grades 1-6)			Lower Secondary Level (Grades 7-9)			Upper Secondary Level (Grades 10-12)			Successful Candidates		
	Promotion	Repetition	Dropout	Promotion	Repetition	Dropout	Promotion	Repetition	Dropout	Grade 6	Grade 9	Grade 12
Baray	88.1	7.6	4.3	68.4	3.8	27.7	0.0	0.0	0.0	365	87	0
Roka Knong	89.8	7.7	2.5	89.6	1.6	8.8	93.5	1.8	4.6	541	467	386
Roka Krau	86.2	6.1	7.7	70.4	3.0	26.6	62.0	13.3	24.7	276	154	17

## 13 Staff and Resources at the District

*This chapter presents data from the District Information System, collected around the middle of 2009 unless otherwise specified.*

### 13.1 District Councilors elected in 2009

Name	Sex	Year of Birth	Function	Phone
គឹម ហាង	M	1948	Chairperson of The Council	016-854 103
ឈុន ស្រី	M	1952	Councillor	016-246 411
ប៊ុច ពិល	M	1943	Councillor	012-979 207
ភី សារុន	F	1956	Councillor	016-515 558
សុក ឈឿង	M	1948	Councillor	016-853 614
ស៊ីវ ជ្រន	M	1953	Councillor	012-542 001
ឃួន ប៊ុយ	M	1945	Councillor	016-396 687
នួន ចាន់	M	1948	Councillor	016-536 176
អ៊ុង ឆន	M	1937	Councillor	081-815 419
អ៊ឹម ស៊ីណាត	F	1957	Councillor	017-752 743
គឹម ឆេន	M	1952	Councillor	011-773 013
យិន សុខេន	M	1967	Councillor	016-879 607
ប៉ែត ហន	M	1948	Councillor	016-320 278
ហង់ សឿន	M	1968	Councillor	089-872 829
សោម កុល	M	1970	Councillor	012-425 945

### 13.2 Committees of the Council

*Please note at the time of producing the district data books the composition of the committees was not known for all district councils and therefore data were not available for 13.2.1, 13.2.2, 13.2.3.*

#### 13.2.1 Technical Facilitation Committee

#### 13.2.2 Women's and Children's Affairs Committee

#### 13.2.3 Procurement Committee

### 13.3 Board of Governors

Name	Sex	DoB	Function	Salary Level	Body	Phone
អ៊ូច ភា	M	1974	Municipality governor	ក.ព.១០	High Ranking Civil Servant	
ឌីម តឹមសាន	M	1969	Municipality deputy governor	ខ.២.៩	Medium Civil Servant	
អ៊ូច សាខន	M	1957	Municipality deputy governor	ខ.២.៨	Medium Civil Servant	
ឈុន ស៊ីសុផាណារ៉េត	F	1967	Municipality deputy governor	ខ.២.៦	Medium Civil Servant	
ណុប ក្រិល	M	1975	Municipality deputy governor	ក.ព.១៣	High Ranking Civil Servant	

### 13.4 Offices under Sala Krong, Sala Srok and Sala Khan

Office Name	Chief		Deputy Chief		No. of Staff				Office Area (m2)	No of vehicle (public or program)	
					State		Contract			vehicle	moto
	M	F	M	F	M	F	M	F			
District/ Khan Cabinet	1	0	1	0	0	0	0	0	Borrow	0	0
Adminnistration Office	1	0	1	0	4	1	0	0	Borrow	0	0
Economy Office	0	1	1	0	3	1	2	0	Borrow	0	0
Social Affair Office	1	0	1	0	3	1	1	0	Borrow	0	0

### 13.5 Municipality/District/Khan line offices

Office Name	Chief		Deputy Chief		No. of Staff				Office Area (m2)	No of vehicle (public or program)	
					State		Contract				
	M	F	M	F	M	F	M	F		vehicle	moto
District/ Khan Police Headquarter	1	0	4	0	75	2	0	0	137	0	0
District/ Khan Military Police Headquarter	0	0	4	0	12	0	0	0	Borrow	0	0
District/ Khan Military Subregion	1	0	2	0	5	0	0	0	45	0	0
Planning Office	1	0	1	0	1	0	0	0	10.8	0	0
Rural Development Office	0	0	1	0	2	0	0	0	10.8	0	0
Women Affairs Office	0	1	0	0	0	0	0	1	10.8	0	0
Environment Office	1	0	0	1	3	0	0	0	Borrow	0	0
Education Office	1	0	2	0	5	6	0	0	Borrow	0	0
Agriculture Office	1	0	1	0	4	0	0	0	10.8	0	0
Social Affairs Office	0	1	2	0	0	0	0	0	10.8	0	0
Culture Office	1	0	1	0	0	0	0	0	10.8	0	0
Cult and Religion Office	1	0	0	1	0	0	0	0	10.8	0	0
Information Office	1	0	1	0	0	0	0	0	10.8	0	0
Public Work Office	0	0	1	0	0	0	0	0	10.8	0	0
Lan Management Office	1	0	3	0	3	0	0	0	Borrow	0	0
Tax Unit	1	0	1	0	1	0	0	0	96.8	0	0
Industry Office	1	0	0	0	2	0	1	0	10.8	0	0
Water Resources Office	1	0	0	0	1	0	0	0	10.8	0	0



## 13.6 Properties and Equipment of District Administration

### 13.6.1 Buildings

Description	Unit	Number	Remark
Office building type			
- Concrete	building	1	
- Wood	building	0	
- Mixed	building	2	
Total floor space	m2		
- Concrete	m2	345	
- Wood	m2	0	
- Mixed	m2	438.6	
Building condition			
- Concrete	%	100	
- Wood	%	0	
- Mixed	%	30	
Office reserved land area	m2	0	
Total office land area	m2	8,179	

### 13.6.2 Means of Transport available at the District Administration

Description	Unit	Number	Remark
Vehicle (type, size and condition)	Vehicle	0	
Motorcycle (type, size and condition)	Motor	0	

### 13.6.3 Equipment in District Offices

Description	Unit	Number	Remark
Generator	per set	0	
Photocopy machine at the office	per set	0	
Private photocopy machine at the district town	place	9	
Telephone network (mobile line service)	network	4	
Telephone network (land line service)	network	1	
Fax (include Fax number)	per set	0	
Computer	per set	2	
Printer	per set	1	
Scanner	Per set	1	
Number of computers those can access Internet and email services in the municipality/ district/khan office (including the technical line offices (please provide the email address)	set	0	
Typewriters (including the technical line offices)	per set	2	
Staff of Municipality/district/khan office can use computer	person	1	

### 13.6.4 Equipment and facilities at the District Town

Description	Unit	Number	Remark
Availability of electricity at noon	Nr Hours	12	
Private internet and email services in the municipality/ district/khan town.	place	0	

### 13.7 Registered Revenue of the District Administration in 2008<sup>4</sup>

Sources of Revenue	Revenue Collecting Agency	Estimated annual revenue (In Riels)
Slaughter Hosue	Agriculture Office	1,900,000
Construction Service	Land Management Office	1,460,000
Land (Tax, Certification and Tenure)	Land Management Office	2,201,000
Revenue Tax	Provincial Taxation Branch	4,400,000
Business Tax	Provincial Taxation Branch	46,000,000
Tamp Tax	Provincial Taxation Branch	2,000,000
Fine	Provincial Taxation Branch	500,000
Public Lightening Tax	Provincial Taxation Branch	500,000
Patent	Provincial Taxation Branch	12,500,000
Transportation Tax	Provincial Taxation Branch	163,000,000
Selling Documents	Provincial Taxation Branch	500,000

### 13.8 Services in the District

#### 13.8.1 Public Sector Services

Type of Infrastructure/services	Unit	Number	
		Public	Private
Schools			
Pre-school	room	12	5
Primary School	room	212	0
Secondary school	room	65	0
High School	room	38	0
University	room	0	63
Health			
Health post	place		
Health center	place	3	0
Referral Hospital	bed	265	0

### 13.9 Civil Society Organizations active in the District

#### 13.9.1 NGOs, Associations, Programs and Projects

Name	Abbr.	Sector Activities	No. of Target Communes	No. of Target Villages	Office in District
NA	KWCD	អប់រំជំងឺអេដស៍	0	0	Yes
NA	BSO	សិទ្ធិប្រជាធិបតេយ្យ	0	0	Yes
NA	TKV	អ្នកសំរបស់រូល	0	0	Yes
NA	HIG	ស្តារលទ្ធភាពកម្មជនពិការ	0	0	Yes
NA	NA	វេទិកាសាធារណៈ	0	0	Yes
NA	VRC	សុខភាពសត្វ	0	0	Yes

<sup>4</sup> Please note that the data in this table are at best estimates. If the table appears blank it does not mean there is no revenue, just that the data have not been recorded/entered.

Name	Abbr.	Sector Activities	No. of Target Communes	No. of Target Villages	Office in District
NA	PC	គាំទ្រអ្នកផ្ទុកអេដស៍	0	0	Yes
NA	NA	សេវាឥរិយាបថ	0	0	Yes
NA	NA	ផ្តល់ការសិក្សាដល់យុវជន	0	0	Yes
NA	SKY	ធានារ៉ាប់រងសុខភាព	0	0	Yes
NA	CHEMS	អប់រំសុខភាព	0	0	Yes
NA	PDAO	អភិវឌ្ឍន៍ចំរុះ និងកែលម្អទំនាក់ទំនងមូលដ្ឋាន	0	0	Yes
NA	OAus	អភិវឌ្ឍសេវាសង្គមចំរុះ	0	0	Yes
NA	CDMD	ស្តារលទ្ធភាពជនពិការ	0	0	Yes
NA	DASPOC	ប្រព័ន្ធកសិកម្ម	0	0	Yes
NA	AMRIT	សេវាឥរិយាបថ	0	0	Yes
NA	NA	សេវាឥរិយាបថ	0	0	Yes
NA	SRC	សេវាសុខភាព	0	0	Yes
NA	NA	មូលនិធិសមធម៌	0	0	Yes
NA	NA	សុខភាពភ្នែក	0	0	Yes
NA	GFOG	ប្រមូលក្មេងកំព្រាចិញ្ចឹម	0	0	Yes
NA	AMK	សេវាឥរិយាបថ	0	0	Yes
NA	PRSAC	សេវាឥរិយាបថ	0	0	Yes
NA	PIN	ធ្វើការតាមមណ្ឌលសុខភាព	0	0	Yes
NA	MSFB	ក្លិនក្រង់ជីវិត	0	0	Yes
NA	AN	សេវាឥរិយាបថ	0	0	Yes
NA	WCV	សង្គ្រោះបន្ទាន់	0	0	Yes

### 13.9.2 Political Parties active in the Municipality, District and Khan

Name	Abbr.	Office in District
Cambodian People Party	CPP	Yes
FUNCINPEC Party	FUNCINPEC	Yes
SAM RAINSY Party	Sam Rainsy Party	Yes

### **13.10 Private Sector Organizations**

#### **13.10.1 Registered Companies in 2008, by District**

*There were no data available for this district at the time data collection*

#### **13.10.2 Farmers in 2008, by District**

*There were no data available for this district at the time data collection*

## **SECTION E: POVERTY DATA**



## 14 Data on Poverty

### 14.1 Predicted Poverty Rates for 2009, by commune

The **Predicted Family Poverty Rate** is based on a statistical model (robust multilevel mixed effect regression) at village level developed by the NCDD M&E Unit and uses CDB data for making an estimate of the predicted poverty rate (this is: *the portion of total families in the district or commune who are expected to be poor*) for the following year using current year data.

The basis for this predicted poverty rate also uses IDPoor (a project of the Ministry of Planning with technical assistance provided by GTZ) data

Commune	2004	2009
Baray	29.70%	22.50%
Roka Knong	18.30%	14.20%
Roka Krau	26.30%	20.60%

### 14.2 Poverty data from survey

#### 14.2.1 Identification of Poor Households Program (IDPoor)

The Ministry of Planning IDPoor Program has developed standardized Procedures for Identification of Poor Households in rural areas. These Procedures are implemented using a participatory and consultative process by sub-national government structures and community representatives.

The IDPoor Program is managed by the Ministry of Planning (MOP), in cooperation with the Ministry of Interior's Department of Local Administration (DOLA). The program is supported by the Federal Republic of Germany, with technical assistance provided by German Technical Cooperation (GTZ). In 2009, AusAID also provided funding support to the Program.

#### Objective

The IDPoor Program aims to implement the Procedures for Identification of Poor Households in rural areas as widely as possible, in order to provide data on the level of poverty of areas and households that can be used by a large range of institutions and organizations for targeting services and development assistance to poor areas and poor households.

**Coverage:** During 2007, 2008 and 2009 the IDPoor Procedures have been implemented in 18 provinces (with partial or complete coverage), covering a total of around 7000 rural villages. The MOP and a number of NGO partners who are Health Equity Fund Operators have collaborated in collecting this data from different areas.

**Categorization:** Identified poor households are classified under two poverty categories: Poor Level 1 (very poor), and Poor Level 2 (poor). Households are classified based on data collected using a standard questionnaire, together with consideration by villagers of these households' special circumstances.

**Further information:** Please go to the IDPoor Program webpage at [www.mop.gov.kh/Projects/IDPoor/tabid/154/Default.aspx](http://www.mop.gov.kh/Projects/IDPoor/tabid/154/Default.aspx)

*This District has not yet been covered by IDPoor*